



**BONE**

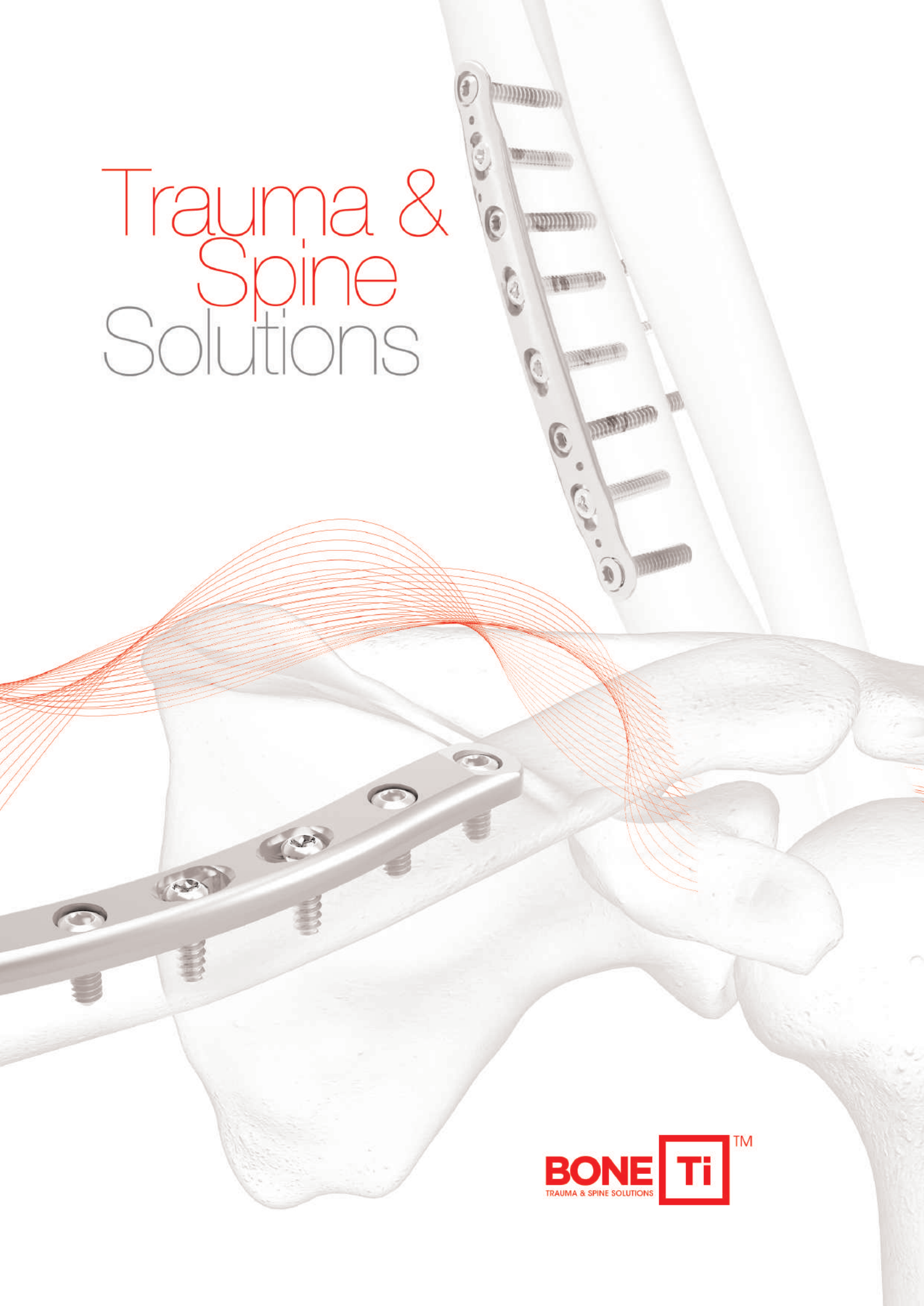
TRAUMA & SPINE SOLUTIONS



Implants  
Catalogue

[www.bone-ti.com](http://www.bone-ti.com)

# Trauma & Spine Solutions



# Contents

Introduction .....	1
Indications .....	1
Features & Benefits.....	2
<b>Spine</b>	
<b>Cervical Plating System</b>	
CanACP .....	5
CanACCESS .....	6
CanACE .....	8
<b>Thoracolumbar System</b>	
CanFIX .....	10
CanART .....	12
CanTSP .....	16
CanTLF .....	27
<b>Lumbar Interbody Fusion System</b>	
CanPEEK-P .....	29
CanPEEK-T .....	30
<b>Cervical Interbody Fusion System</b>	
CanPEEK-C .....	31
CanPKP Kyphoplasty System.....	32
CanPKP Kyphoplasty Instrument Set	
<b>Trauma</b>	
<b>Small Fragment Plate System</b>	
Clavicle Plates .....	33
Humerus Plates .....	35
Radius Plates.....	38
Ulna Plates .....	42
Calcaneus Plates .....	43
<b>Large Fragment Plate System</b>	
Femoral Plates.....	44
Tibial Plates.....	46
Fibula Plates .....	49
Pelvis Plates .....	50
<b>Multifunctional Plate System</b>	
Multifunctional Plates .....	51
<b>Mini Plate System</b>	
Mini Plates .....	53
<b>Screw System</b>	
Cortical and Cancellous Screws .....	59
Locking Screws .....	65
Cannulated Screws .....	68
Headless Compression Cannulated Screws .....	72
<b>Nail System</b>	
Proximal Femoral Nail System PFN .....	76
Proximal Femoral Nail System EFN .....	79
Tibial Nail System TN .....	81
Tibial Nail System ETN .....	83

## INTRODUCTION

The locking screw concept was produced by Dr. Tepic S and Dr. Perren SM for the first time in 1995. With locking compression plate put in use, it became one of the most important developments for plate and screw internal fixation in recent years. Locking screws provide the ability to create a fixed-angle construct while utilizing familiar conventional plating techniques. The fixed-angle constructed functions as an internal fixator which maintains primary and secondary loss of reduction. This kind of construction also provides improved fixation in osteopenic bone or multifragment fractures, where traditional screw purchase is compromised. LCP constructs do not rely on plate-to-bone compression to maintain stability. Therefore, the periosteum will be protected and the blood supply to the bone preserved. With these notorious improvements, the LCP becomes an implant category of increasing importance for trauma treatment.

El concepto de tornillo de bloqueo fue producido por el Dr. Tepic S y el Dr. Perren SM por primera vez en 1995. Con la placa de compresión bloqueada puesta en uso, se convirtió en uno de los desarrollos más importantes para la fijación interna de placas y tornillos en los últimos años. Los tornillos de bloqueo proporcionan la capacidad de crear una construcción de ángulo fijo mientras se utilizan técnicas familiares de placas convencionales. La construcción de ángulo fijo funciona como una fijación interna que mantiene la pérdida primaria y secundaria de reducción. Este tipo de construcción también proporciona una fijación mejorada en hueso osteopénico o fracturas multi-fragmentarias donde el uso de tornillos tradicionales está comprometido. La construcción de placas LCP no dependen de la compresión de placa a hueso para mantener la estabilidad. Por lo tanto, el periostio estará protegido y el suministro de sangre al hueso conservado. Con estas notables mejoras, el LCP se convierte en una categoría de implantes de creciente importancia para el tratamiento de traumatismos.

## INDICATIONS INDICACIONES

The LCP system applies to many different plate types and is therefore suitable for a large number of fracture types.

El sistema LCP se aplica a muchos tipos de placas diferentes y por lo tanto es adecuado para un gran número de tipos de fractura.

- Fractures  
Fracturas
- Osteotomies  
Osteotomías
- Malunions, nonunions  
Malas uniones, No uniones

## FEATURES & BENEFITS CARACTERÍSTICAS & BENEFICIOS

- The unique locking hole design.  
Diseño de único orificio de bloqueo

- The locking holes allow placement of conventional cortex and cancellous bone screws, or locking screws on the same hole\*.  
Los orificios de bloqueo permiten la colocación de tornillos corticales convencionales y esponjosos y / o tornillos de bloqueo en el mismo orificio\*.

*\*Not for all locking compression plates.*

*\*No para todas las placas de compresión bloqueadas.*



- Combi holes.  
Orificios combinados

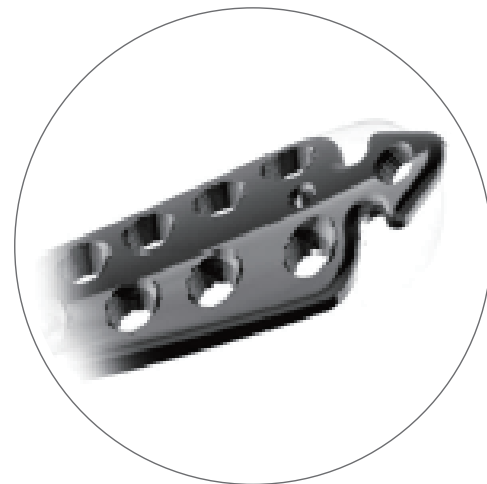
- The Combi holes allow placement of conventional cortex and cancellous bone screws, on one side, or threaded conical locking screws on the opposite side of each hole.

Los orificios combinados permiten la colocación de los tornillos convencionales corticales y esponjosos en un lado, o tornillos de bloqueo cónicos roscados en el lado opuesto de cada orificio.



## FEATURES & BENEFITS CARACTERÍSTICAS & BENEFICIOS

- Periarticular plates anatomically designed.  
Placas periarticulares con diseño anatómico.
- Periarticular plates are pre-contoured to create an anatomical fit, that requires little or no additional bending and minimizes impinging on soft tissue.  
Las placas periarticulares están preformadas para crear un ajuste anatómico que requiere poca o ninguna incisión adicional y minimiza la incidencia en los tejidos blandos.



- Locking screw with StarDrive recess.  
Tornillo de bloqueo con ranura de estrella
- The StarDrive recess provides improved torque transmission to the screw, and minimizes the possibility of cross thread.  
La ranura de estrella proporciona una mejor transmisión de torque al tornillo y minimiza la posibilidad de enrosque transversal.

- Locking screw with self-tapping flutes .  
Tornillo de bloqueo con bordes auto-perforantes.
- Less surgical steps  
Menos pasos quirúrgicos.



**FEATURES & BENEFITS****CARACTERÍSTICAS & BENEFICIOS**

- Cortical thread with large core diameter.  
Rosca cortical con diámetro de núcleo grande.
- The large core diameter improves bending and shears strength of the screw, and distributes the load over a larger area in the bone.  
El gran diámetro del núcleo mejora la flexión y la resistencia al corte del tornillo y distribuye la carga sobre un área mayor en el hueso.



- Special double-lead thread beneath the screw head engages and locks into the threaded holes of the plate .  
El labrado de doble rosca especial bajo la cabeza del tornillo se engancha y bloquea en los orificios roscados de la placa.
- Easier and faster locking of the screws with the plates.  
Fácil y rápido bloqueo de los tornillos con las placas.



## Anterior Cervical Plating System CanACP

### Anterior Cervical Plate



Hole	Length	P.N	Material
4	23.5	231111235	Titanium
	26	231111260	Titanium
	28.5	231111285	Titanium
	31	231111310	Titanium
	33.5	231111335	Titanium
	36	231111365	Titanium



Hole	Length	P.N	Material
6	38.5	231112385	Titanium
	41	231112410	Titanium
	43.5	231112435	Titanium
	46	231112460	Titanium
	48.5	231112485	Titanium
	51	231112510	Titanium
	53.5	231112535	Titanium



Hole	Length	P.N	Material
8	60	231113600	Titanium
	64	231113640	Titanium
	68	231113680	Titanium
	72	231113720	Titanium
	76	231113760	Titanium
	80	231113800	Titanium

### Cancellous Bone Screw, with self-tapping



Hole	Length	P.N	Material
Φ3.5	12	231121912	Titanium
	14	231121914	Titanium
	16	231121916	Titanium
	18	231121918	Titanium
	20	231121920	Titanium

### Cancellous Bone Screw, with self-tapping



Spec	Length	P.N	Material
Φ4.0	12	231122912	Titanium
	14	231122914	Titanium
	16	231122916	Titanium
	18	231122918	Titanium
	20	231122920	Titanium



Anterior Cervical Plating System CanACCESS

Anterior Cervical Plate



Hole	Length	P.N	Material
4	23	231311230	Titanium
	25	231311250	Titanium
	27	231311270	Titanium
	29	231311290	Titanium
	31	231311310	Titanium
	33	231311330	Titanium
	35	231311350	Titanium



Hole	Length	P.N	Material
6	37	231312370	Titanium
	39	231312390	Titanium
	41	231312410	Titanium
	43	231312430	Titanium
	45	231312450	Titanium
	47	231312470	Titanium
	49	231312490	Titanium
	51	231312510	Titanium
	53	231312530	Titanium
	55	231312550	Titanium



Hole	Length	P.N	Material
8	54	231313540	Titanium
	57	231313570	Titanium
	60	231313600	Titanium
	63	231313630	Titanium
	66	231313660	Titanium
	69	231313690	Titanium
	72	231313720	Titanium
	75	231313750	Titanium
	78	231313780	Titanium

Variable-angle Screw, self-drilling



Hole	Length	P.N	Material
Φ4.0	12	231322112	Titanium
	13	231322113	Titanium
	14	231322114	Titanium
	15	231322115	Titanium
	16	231322116	Titanium
	17	231322117	Titanium
	18	231322118	Titanium
	20	231322120	Titanium

Variable-angle Screw, self-drilling



Hole	Length	P.N	Material
Φ4.5	12	231323112	Titanium
	13	231323113	Titanium
	14	231323114	Titanium
	15	231323115	Titanium
	16	231323116	Titanium
	17	231323117	Titanium
	18	231323118	Titanium
	20	231323120	Titanium

Anterior Cervical Plating System CanACCESS

Fixed-angle Screw,  
self-drilling



Hole	Length	P.N	Material
Φ4.0	12	231322312	Titanium
	13	231322313	Titanium
	14	231322314	Titanium
	15	231322315	Titanium
	16	231322316	Titanium
	17	231322317	Titanium
	18	231322318	Titanium
	20	231322320	Titanium

Fixed-angle Screw,  
self-drilling



Hole	Length	P.N	Material
Φ4.5	12	231323312	Titanium
	13	231323313	Titanium
	14	231323314	Titanium
	15	231323315	Titanium
	16	231323316	Titanium
	17	231323317	Titanium
	18	231323318	Titanium
	20	231323320	Titanium

Anterior Cervical Plating System CanACE

Anterior Cervical Plate



Hole	Length	P.N	Material
4	23	231511230	Titanium
	25	231511250	Titanium
	27	231511270	Titanium
	29	231511290	Titanium
	31	231511310	Titanium
	33	231511330	Titanium
	35	231511350	Titanium

Hole	Length	P.N	Material
6	37	231512370	Titanium
	39	231512390	Titanium
	41	231512410	Titanium
	43	231512430	Titanium
	45	231512450	Titanium
	47	231512470	Titanium
	49	231512490	Titanium
	51	231512510	Titanium
	53	231512530	Titanium
	55	231512550	Titanium

Hole	Length	P.N	Material
8	54	231513540	Titanium
	57	231513570	Titanium
	60	231513600	Titanium
	63	231513630	Titanium
	66	231513660	Titanium
	69	231513690	Titanium
	72	231513720	Titanium
	75	231513750	Titanium
	78	231513780	Titanium

Variable-angle Screw, self-drilling



Spec	Length	P.N	Material
Φ4.0	11	231522111	Titanium
	12	231522112	Titanium
	13	231522113	Titanium
	14	231522114	Titanium
	15	231522115	Titanium
	16	231522116	Titanium
	17	231522117	Titanium

Fixed-angle Screw, self-drilling



Spec	Length	P.N	Material
Φ4.0	11	231522311	Titanium
	12	231522312	Titanium
	13	231522313	Titanium
	14	231522314	Titanium
	15	231522315	Titanium
	16	231522316	Titanium
	17	231522317	Titanium

Anterior Cervical Plating System CanACE

Variable-angle Screw,  
self-drilling



Spec	Length	P.N	Material
Φ4.5	11	231523111	Titanium
	12	231523112	Titanium
	13	231523113	Titanium
	14	231523114	Titanium
	15	231523115	Titanium
	16	231523116	Titanium
	17	231523117	Titanium

Fixed-angle Screw,  
self-drilling



Spec	Length	P.N	Material
Φ4.5	11	231523311	Titanium
	12	231523312	Titanium
	13	231523313	Titanium
	14	231523314	Titanium
	15	231523315	Titanium
	16	231523316	Titanium
	17	231523317	Titanium

Posterior Thoracolumbar System CanFIX

Reduction Polyaxial  
Pedicle Screw



Spec	Length	P.N	Material
Φ4.5	30	232112130	Titanium
	35	232112135	Titanium
	40	232112140	Titanium
Φ5.0	35	232112235	Titanium
	40	232112240	Titanium
	35	232112335	Titanium
Φ5.5	40	232112340	Titanium
	45	232112345	Titanium
	50	232112350	Titanium
	55	232112355	Titanium
Φ6.0	35	232112435	Titanium
	40	232112440	Titanium
	45	232112445	Titanium
	50	232112450	Titanium
	55	232112455	Titanium
Φ6.5	35	232112535	Titanium
	40	232112540	Titanium
	45	232112545	Titanium
	50	232112550	Titanium
	55	232112555	Titanium
	60	232112560	Titanium
	70	232112570	Titanium
80	232112580	Titanium	
Φ7.0	35	232112635	Titanium
	40	232112640	Titanium
	45	232112645	Titanium

Reduction Monoaxial  
Pedicle Screw



Spec	Length	P.N	Material
Φ4.5	30	232111130	Titanium
	35	232111135	Titanium
	40	232111140	Titanium
Φ5.0	30	232111230	Titanium
	35	232111235	Titanium
	40	232111240	Titanium
Φ5.5	45	232111245	Titanium
	35	232111335	Titanium
	40	232111340	Titanium
Φ6.0	45	232111345	Titanium
	50	232111350	Titanium
	55	232111355	Titanium
	35	232111435	Titanium
Φ6.5	40	232111440	Titanium
	45	232111445	Titanium
	50	232111450	Titanium
	55	232111455	Titanium
	60	232111460	Titanium
Φ7.0	35	232111535	Titanium
	40	232111540	Titanium
	45	232111545	Titanium
	50	232111550	Titanium
	55	232111555	Titanium
	60	232111560	Titanium
Φ7.0	65	232111565	Titanium
	35	232111635	Titanium
	40	232111640	Titanium
	45	232111645	Titanium
	50	232111650	Titanium

Posterior Thoracolumbar System CanFIX

Cross Connector



Hole	P.N	Material
50	232110650	Titanium
55	232110655	Titanium
60	232110660	Titanium
65	232110665	Titanium
70	232110670	Titanium
75	232110675	Titanium
80	232110680	Titanium
85	232110685	Titanium

Cross Connector	P.N	Material
/	232110600	Titanium

Rod



Spec	Length	P.N	Material
Φ6.0	40	232119304	Titanium
	50	232119305	Titanium
	60	232119306	Titanium
	65	232119365	Titanium
	70	232119307	Titanium
	80	232119308	Titanium
	90	232119309	Titanium
	100	232119310	Titanium
	110	232119311	Titanium
	120	232119312	Titanium
	125	232119313	Titanium
	130	232119314	Titanium
	140	232119315	Titanium
	150	232119316	Titanium
	160	232119317	Titanium
	170	232119318	Titanium
	180	232119319	Titanium
	200	232119320	Titanium
	240	232119324	Titanium
	250	232119325	Titanium
280	232119328	Titanium	
300	232119330	Titanium	
400	232119340	Titanium	

Posterior Thoracolumbar System CanART

Standard Polyaxial  
Pedicle Screw



Spec	Length	P.N	Material
Φ 4.5	25	232216125	Titanium
	30	232216130	Titanium
	35	232216135	Titanium
	40	232216140	Titanium
	45	232216145	Titanium
Φ 5.0	25	232216225	Titanium
	30	232216230	Titanium
	35	232216235	Titanium
	40	232216240	Titanium
	45	232216245	Titanium
Φ 5.5	50	232216250	Titanium
	25	232216325	Titanium
	30	232216330	Titanium
	35	232216335	Titanium
	40	232216340	Titanium
Φ 6.0	45	232216345	Titanium
	50	232216350	Titanium
	25	232216425	Titanium
	30	232216430	Titanium
	35	232216435	Titanium
Φ 6.5	40	232216440	Titanium
	45	232216445	Titanium
	50	232216450	Titanium
	55	232216455	Titanium
	25	232216525	Titanium
Φ 7.0	30	232216530	Titanium
	35	232216535	Titanium
	40	232216540	Titanium
	45	232216545	Titanium
	50	232216550	Titanium
Φ 7.5	55	232216555	Titanium
	60	232216560	Titanium
	35	232216635	Titanium
	40	232216640	Titanium
	45	232216645	Titanium
Φ 8.0	50	232216650	Titanium
	55	232216655	Titanium

Posterior Thoracolumbar System CanART

Reduction Polyaxial  
Pedicle Screw



Spec	Length	P.N	Material
Φ 4.5	25	232212125	Titanium
	30	232212130	Titanium
	35	232212135	Titanium
	40	232212140	Titanium
	45	232212145	Titanium
Φ 5.0	25	232212225	Titanium
	30	232212230	Titanium
	35	232212235	Titanium
	40	232212240	Titanium
	45	232212245	Titanium
Φ 5.5	25	232212325	Titanium
	30	232212330	Titanium
	35	232212335	Titanium
	40	232212340	Titanium
	45	232212345	Titanium
Φ 6.0	25	232212425	Titanium
	30	232212430	Titanium
	35	232212435	Titanium
	40	232212440	Titanium
	45	232212445	Titanium
Φ 6.5	50	232212450	Titanium
	55	232212455	Titanium
	25	232212525	Titanium
	30	232212530	Titanium
	35	232212535	Titanium
Φ 7.0	40	232212540	Titanium
	45	232212545	Titanium
	50	232212550	Titanium
	55	232212555	Titanium
	60	232212560	Titanium
Φ 7.0	35	232211635	Titanium
	40	232211640	Titanium
	45	232211645	Titanium
	50	232211650	Titanium
	55	232211655	Titanium



Posterior Thoracolumbar System CanART

Standard Monoaxial  
Pedicle Screw



Spec	Length	P.N	Material
Φ 4.5	25	232215125	Titanium
	30	232215130	Titanium
	35	232215135	Titanium
	40	232215140	Titanium
	45	232215145	Titanium
Φ 5.0	25	232215225	Titanium
	30	232215230	Titanium
	35	232215235	Titanium
	40	232215240	Titanium
	45	232215245	Titanium
Φ 5.5	50	232215250	Titanium
	25	232215325	Titanium
	30	232215330	Titanium
	35	232215335	Titanium
	40	232215340	Titanium
Φ 6.0	45	232215345	Titanium
	50	232215350	Titanium
	25	232215425	Titanium
	30	232215430	Titanium
	35	232215435	Titanium
Φ 6.5	40	232215440	Titanium
	45	232215445	Titanium
	50	232215450	Titanium
	55	232215455	Titanium
	25	232215525	Titanium
Φ 7.0	30	232215530	Titanium
	35	232215535	Titanium
	40	232215540	Titanium
	45	232215545	Titanium
	50	232215550	Titanium
Φ 7.5	55	232215555	Titanium
	60	232215560	Titanium
	35	232215635	Titanium
	40	232215640	Titanium
	45	232215645	Titanium
Φ 8.0	50	232215650	Titanium
	55	232215655	Titanium

Reduction Monoaxial  
Pedicle Screw



Spec	Length	P.N	Material
Φ 4.5	25	232211125	Titanium
	30	232211130	Titanium
	35	232211135	Titanium
	40	232211140	Titanium
	45	232211145	Titanium
Φ 5.0	25	232211225	Titanium
	30	232211230	Titanium
	35	232211235	Titanium
	40	232211240	Titanium
	45	232211245	Titanium
Φ 5.5	50	232211250	Titanium
	25	232211325	Titanium
	30	232211330	Titanium
	35	232211335	Titanium
	40	232211340	Titanium
Φ 6.0	45	232211345	Titanium
	50	232211350	Titanium
	25	232211425	Titanium
	30	232211430	Titanium
	35	232211435	Titanium
Φ 6.5	40	232211440	Titanium
	45	232211445	Titanium
	50	232211450	Titanium
	55	232211455	Titanium
	25	232211525	Titanium
Φ 7.0	30	232211530	Titanium
	35	232211535	Titanium
	40	232211540	Titanium
	45	232211545	Titanium
	50	232211550	Titanium
Φ 7.5	55	232211555	Titanium
	60	232211560	Titanium
	35	232211635	Titanium
	40	232211640	Titanium
	45	232211645	Titanium
Φ 8.0	50	232211650	Titanium
	55	232211655	Titanium

Posterior Thoracolumbar System CanART

Low Profile Crosslink



Hole	P.N	Material
32~40	232210732	Titanium
40~48	232210742	Titanium
50~65	232210750	Titanium

Low Profile Crosslink



Hole	P.N	Material
30	232210830	Titanium
36	232210836	Titanium
40	232210840	Titanium
46	232210846	Titanium
50	232210850	Titanium
56	232210856	Titanium
60	232210860	Titanium

Rod



Spec	Length	P.N	Material
Φ6.0	40	232219304	Titanium
	45	232219345	Titanium
	50	232219305	Titanium
	60	232219306	Titanium
	65	232219365	Titanium
	70	232219307	Titanium
	80	232219308	Titanium
	90	232219309	Titanium
	100	232219310	Titanium
	110	232219311	Titanium
	120	232219312	Titanium
	125	232219319	Titanium
	130	232219313	Titanium
	140	232219314	Titanium
	150	232219315	Titanium
	160	232219316	Titanium
	170	232219317	Titanium
	180	232219318	Titanium
	200	232219320	Titanium
	240	232219324	Titanium
250	232219325	Titanium	
280	232219328	Titanium	
300	232219330	Titanium	
400	232219340	Titanium	
500	232219350	Titanium	

Posterior Thoracolumbar Fixation System CanTSP

Standard Monoaxial  
Pedicle Screw



Standard Polyaxial  
Pedicle Screw



Spec	Length	P.N	Material
Φ 4.5	35	232515135	Titanium
	40	232515140	Titanium
Φ 5.0	35	232515235	Titanium
	40	232515240	Titanium
Φ 5.5	45	232515245	Titanium
	35	232515335	Titanium
	40	232515340	Titanium
	45	232515345	Titanium
	50	232515350	Titanium
Φ 6.0	55	232515355	Titanium
	35	232515435	Titanium
	40	232515440	Titanium
	45	232515445	Titanium
Φ 6.5	50	232515450	Titanium
	35	232515535	Titanium
	40	232515540	Titanium
	45	232515545	Titanium
Φ 7.0	50	232515550	Titanium
	55	232515555	Titanium
	35	232515635	Titanium
	40	232515640	Titanium
Φ 7.5	45	232515645	Titanium
	50	232515650	Titanium
	55	232515655	Titanium
Φ 4.5	35	232515735	Titanium
	40	232515740	Titanium
Φ 5.0	45	232515745	Titanium
	50	232515750	Titanium
	55	232515755	Titanium
Φ 4.5	25	232516125	Titanium
	30	232516130	Titanium
	35	232516125	Titanium
	40	232516130	Titanium
	35	232516135	Titanium
Φ 5.0	40	232516140	Titanium
	35	232516235	Titanium
	40	232516240	Titanium
Φ 5.5	45	232516245	Titanium
	25	232516325	Titanium
	30	232516330	Titanium
	35	232516335	Titanium
	40	232516340	Titanium
Φ 6.0	45	232516345	Titanium
	50	232516350	Titanium
	35	232516435	Titanium
	40	232516440	Titanium
Φ 6.5	45	232516445	Titanium
	50	232516450	Titanium
	55	232516455	Titanium
	35	232516535	Titanium
Φ 7.0	40	232516540	Titanium
	45	232516545	Titanium
	50	232516550	Titanium
	55	232516555	Titanium
	60	232516560	Titanium
Φ 7.5	30	232516630	Titanium
	35	232516635	Titanium
	40	232516640	Titanium
	45	232516645	Titanium
	50	232516650	Titanium
Φ 7.5	55	232516655	Titanium
	30	232516730	Titanium
	35	232516735	Titanium
	40	232516740	Titanium
	45	232516745	Titanium
Φ 7.5	50	232516750	Titanium
	55	232516755	Titanium

Posterior Thoracolumbar Fixation System CanTSP

Reduction Monoaxial  
Pedicle Screw



Spec	Length	P.N	Material
Φ 4.5	25	232511125	Titanium
	30	232511130	Titanium
	35	232511135	Titanium
	40	232511140	Titanium
Φ 5.0	35	232511235	Titanium
	40	232511240	Titanium
	45	232511245	Titanium
Φ 5.5	25	232511325	Titanium
	30	232511330	Titanium
	35	232511335	Titanium
	40	232511340	Titanium
	45	232511345	Titanium
	50	232511350	Titanium
Φ 6.0	35	232511435	Titanium
	40	232511440	Titanium
	45	232511445	Titanium
	50	232511450	Titanium
	55	232511455	Titanium
Φ 6.5	35	232511535	Titanium
	40	232511540	Titanium
	45	232511545	Titanium
	50	232511550	Titanium
	55	232511555	Titanium
	60	232511560	Titanium
Φ 7.0	35	232511635	Titanium
	40	232511640	Titanium
	45	232511645	Titanium
	50	232511650	Titanium
	55	232511655	Titanium
Φ 7.5	35	232511735	Titanium
	40	232511740	Titanium
	45	232511745	Titanium
	50	232511750	Titanium
	55	232511755	Titanium
Φ 8.5	35	KZJ8021-01	Titanium
	40	KZJ8021-02	Titanium
	45	KZJ8021-03	Titanium
	50	KZJ8021-04	Titanium

Posterior Thoracolumbar Fixation System CanTSP

Reduction Polyaxial  
Pedicle Screw



Spec	Length	P.N	Material
Φ 4.5	25	232512125	Titanium
	30	232512130	Titanium
	35	232512135	Titanium
	40	232512140	Titanium
Φ 5.0	25	232512225	Titanium
	30	232512230	Titanium
	35	232512235	Titanium
	40	232512240	Titanium
Φ 5.5	45	232512245	Titanium
	25	232512325	Titanium
	30	232512330	Titanium
	35	232512335	Titanium
Φ 5.5	40	232512340	Titanium
	45	232512345	Titanium
	50	232512350	Titanium
	Φ 6.0	35	232512435
40		232512440	Titanium
45		232512445	Titanium
50		232512450	Titanium
Φ 6.5	55	232512455	Titanium
	30	232512530	Titanium
	35	232512535	Titanium
	40	232512540	Titanium
	45	232512545	Titanium
	50	232512550	Titanium
	55	232512555	Titanium
	60	232512560	Titanium
Φ 7.0	70	232512570	Titanium
	75	232512575	Titanium
	80	232512580	Titanium
	85	232512585	Titanium
	35	232512635	Titanium
	40	232512640	Titanium
	45	232512645	Titanium
Φ 7.5	50	232512650	Titanium
	55	232512655	Titanium
	30	232512730	Titanium
	35	232512735	Titanium
	40	232512740	Titanium
	45	232512745	Titanium
	50	232512750	Titanium
	55	232512755	Titanium
Φ 8.5	60	232512760	Titanium
	65	232512765	Titanium
	70	232512770	Titanium
	75	232512775	Titanium
	80	232512780	Titanium
	85	232512785	Titanium
		35	KZJ8020-01-00
	40	KZJ8020-02-00	Titanium
	45	KZJ8020-03-00	Titanium

Posterior Thoracolumbar Fixation System CanTSP(5.5)

Rod



Spec	Length	P.N	Material
Φ5.5	40	232519204	Titanium
	50	232519205	Titanium
	60	232519206	Titanium
	70	232519207	Titanium
	80	232519208	Titanium
	90	232519209	Titanium
	100	232519210	Titanium
	110	232519211	Titanium
	120	232519212	Titanium
	130	232519213	Titanium
	140	232519214	Titanium
	150	232519215	Titanium
	200	232519220	Titanium
	250	232519225	Titanium
	300	232519230	Titanium
	400	232519240	Titanium
	500	232519250	Titanium
	600	232519260	Titanium

Set Screw



Spec	P.N	Material
/	232512800	Titanium

Set Screw



Spec	P.N	Material
/	232512801	Titanium

Posterior Thoracolumbar Fixation System CanTSP(5.5)

Pedicle Hook



Spec	P.N	Material
S	232510101	Titanium
M	232510102	Titanium
L	232510103	Titanium

Wide Blade Hook



Spec	P.N	Material
S	232510201	Titanium
M	232510202	Titanium
L	232510203	Titanium

Narrow Blade Hook



Spec	P.N	Material
S	232510301	Titanium
M	232510302	Titanium
L	232510303	Titanium

Thoracic Supralaminar Hook



Spec	P.N	Material
S	232510401	Titanium
M	232510402	Titanium
L	232510403	Titanium

Posterior Thoracolumbar Fixation System CanTSP(5.5)

Thoracic Supralaminar Hook



Spec	P.N	Material
S	232510501	Titanium
L	232510502	Titanium

Extended Body Hook



Spec	P.N	Material
S	232510601	Titanium
M	232510602	Titanium
L	232510603	Titanium

Angled Thoracic Hook



Spec	P.N	Material	
/	Left	232510701	Titanium
	Right	232510702	Titanium

Thoracic Infralaminar Hook



Spec	P.N	Material
/	232510511	Titanium



Posterior Thoracolumbar Fixation System CanTSP(5.5)

Offset Hook



Spec		P.N	Material
/	Right	232510801	Titanium
	Left	232510802	Titanium

Multi-axial Crosslink



Spec		P.N	Material
32-40		232510732	Titanium
42-48		232510742	Titanium
50-65		232510750	Titanium

Low profile crosslink



Spec		P.N	Material
30		232510630	Titanium
36		232510636	Titanium
40		232510640	Titanium
46		232510646	Titanium
50		232510650	Titanium
56		232510656	Titanium
60		232510660	Titanium

Posterior Thoracolumbar Fixation System CanTSP(6.0)

Standard Monoaxial  
Pedicle Screw



Spec	Length	P.N	Material
Φ 4.5	35	232525135	Titanium
	40	232525140	Titanium
Φ 5.0	35	232525235	Titanium
	40	232525240	Titanium
	45	232525245	Titanium
Φ 5.5	35	232525335	Titanium
	40	232525340	Titanium
	45	232525345	Titanium
	50	232525350	Titanium
	55	232525355	Titanium
Φ 6.0	35	232525435	Titanium
	40	232525440	Titanium
	45	232525445	Titanium
	50	232525450	Titanium
Φ 6.5	35	232525535	Titanium
	40	232525540	Titanium
	45	232525545	Titanium
	50	232525550	Titanium
Φ 7.0	55	232525555	Titanium
	35	232525635	Titanium
	40	232525640	Titanium
	45	232525645	Titanium
	50	232525650	Titanium
Φ 7.5	55	232525655	Titanium
	35	232525735	Titanium
	40	232525740	Titanium
	45	232525745	Titanium
Φ 7.5	50	232525750	Titanium
	55	232525755	Titanium

Standard Polyaxial  
Pedicle Screw



Spec	Length	P.N	Material
Φ 4.5	35	232526135	Titanium
	40	232526140	Titanium
Φ 5.0	35	232526235	Titanium
	40	232526240	Titanium
	45	232526245	Titanium
Φ 5.5	35	232526335	Titanium
	40	232526340	Titanium
	45	232526345	Titanium
	50	232526350	Titanium
Φ 6.0	35	232526435	Titanium
	40	232526440	Titanium
	45	232526445	Titanium
	50	232526450	Titanium
Φ 6.5	55	232526455	Titanium
	35	232526535	Titanium
	40	232526540	Titanium
	45	232526545	Titanium
	50	232526550	Titanium
Φ 7.0	55	232526555	Titanium
	60	232526560	Titanium
	35	232526635	Titanium
	40	232526640	Titanium
Φ 7.5	45	232526645	Titanium
	50	232526650	Titanium
	55	232526655	Titanium
Φ 7.5	35	232526735	Titanium
	40	232526740	Titanium
	45	232526745	Titanium
	50	232526750	Titanium
Φ 7.5	55	232526755	Titanium

Posterior Thoracolumbar Fixation System CanTSP(6.0)

Reduction Monoaxial  
Pedicle Screw



Spec	Length	P.N	Material
Φ 4.5	35	232521135	Titanium
	40	232521140	Titanium
Φ 5.0	35	232521235	Titanium
	40	232521240	Titanium
	45	232521245	Titanium
	35	232521335	Titanium
	40	232521340	Titanium
Φ 5.5	45	232521345	Titanium
	50	232521350	Titanium
	55	232521355	Titanium
	35	232521435	Titanium
Φ 6.0	40	232521440	Titanium
	45	232521445	Titanium
	50	232521450	Titanium
Φ 6.5	35	232521535	Titanium
	40	232521540	Titanium
	45	232521545	Titanium
	50	232521550	Titanium
	55	232521555	Titanium
Φ 7.0	35	232521635	Titanium
	40	232521640	Titanium
	45	232521645	Titanium
Φ 7.5	50	232521650	Titanium
	55	232521655	Titanium
	35	232521735	Titanium
	40	232521740	Titanium
	45	232521745	Titanium
Φ 7.5	50	232521750	Titanium
	55	232521755	Titanium

Reduction Polyaxial  
Pedicle Screw



Spec	Length	P.N	Material
Φ 4.5	35	232522135	Titanium
	40	232522140	Titanium
Φ 5.0	35	232522235	Titanium
	40	232522240	Titanium
	45	232522245	Titanium
Φ 5.5	35	232522335	Titanium
	40	232522340	Titanium
	45	232522345	Titanium
	50	232522350	Titanium
Φ 6.0	35	232522435	Titanium
	40	232522440	Titanium
	45	232522445	Titanium
	50	232522450	Titanium
	55	232522455	Titanium
Φ 6.5	35	232522535	Titanium
	40	232522540	Titanium
	45	232522545	Titanium
	50	232522550	Titanium
	55	232522555	Titanium
	60	232522560	Titanium
Φ 7.0	35	232522635	Titanium
	40	232522640	Titanium
	45	232522645	Titanium
	50	232522650	Titanium
Φ 7.5	55	232522655	Titanium
	35	232522735	Titanium
	40	232522740	Titanium
	45	232522745	Titanium
	50	232522750	Titanium
Φ 7.5	55	232522755	Titanium

Posterior Thoracolumbar Fixation System CanTSP(6.0)

Rod



Spec	Length	P.N	Material
	40	232519304	Titanium
	50	232519305	Titanium
	60	232519306	Titanium
	65	232519365	Titanium
	70	232519307	Titanium
	80	232519308	Titanium
	90	232519309	Titanium
	100	232519310	Titanium
	110	232519311	Titanium
	120	232519312	Titanium
Φ 6.0	130	232519313	Titanium
	140	232519314	Titanium
	150	232519315	Titanium
	160	232519316	Titanium
	170	232519317	Titanium
	180	232519318	Titanium
	190	232519319	Titanium
	200	232519320	Titanium
	240	232519324	Titanium
	250	232519325	Titanium
	280	232519328	Titanium
	300	232519330	Titanium
	400	232519340	Titanium

Set Screw



Spec	Length	P.N	Material
/	/	232522800	Titanium

Set Screw



Spec	Length	P.N	Material
/	/	232522801	Titanium

Posterior Thoracolumbar Fixation System CanTSP(6.0)

Multi-axial Crosslink



Spec	P.N	Material
32-40	232520732	Titanium
42-48	232520742	Titanium
50-65	232520750	Titanium

Low Profile Cross Link



Spec	P.N	Material
30	232520630	Titanium
36	232520636	Titanium
40	232520640	Titanium
46	232520646	Titanium
50	232520650	Titanium
56	232520656	Titanium
60	232520660	Titanium

Posterior Thoracolumbar Fixation System CanTLF

Threaded Pedicle Screw



Spec	P.N	Material
Φ6.0×35	232412435	Titanium

Threaded Pedicle Screw With Double Lead Thread



Spec	P.N	Material
Φ7.0×40	232414640	Titanium
Φ7.0×45	232414645	Titanium
Φ7.0×50	232414650	Titanium

Pedicle Screw with Double Lead Thread



Spec	P.N	Material
Φ5.0 × 35	232413235	Titanium
Φ5.0 × 40	232413240	Titanium
Φ5.0 × 45	232413245	Titanium
Φ5.0 × 50	232413250	Titanium
Φ5.0 × 55	232413255	Titanium
Φ6.0 × 35	232413435	Titanium
Φ6.0 × 40	232413440	Titanium
Φ6.0 × 45	232413445	Titanium
Φ6.0 × 50	232413450	Titanium
Φ6.0 × 55	232413455	Titanium
Φ7.0 × 35	232413635	Titanium
Φ7.0 × 40	232413640	Titanium
Φ7.0 × 45	232413645	Titanium
Φ7.0 × 50	232413650	Titanium
Φ7.0 × 55	232413655	Titanium

Connector



Spec	P.N	Material
I	232410100	Titanium

Posterior Thoracolumbar Fixation System CanTLF

Crosslink



Spec	P.N	Material
30	232410730	Titanium
40	232410740	Titanium
50	232410750	Titanium
60	232410760	Titanium
65	232410765	Titanium

Rod



Spec	Length	P.N	Material
	40	232419304	Titanium
	50	232419305	Titanium
	60	232419306	Titanium
	65	232419365	Titanium
	70	232419307	Titanium
	80	232419308	Titanium
	90	232419309	Titanium
	100	232419310	Titanium
	110	232419311	Titanium
	120	232419312	Titanium
	125	232419319	Titanium
Φ 6.0	130	232419313	Titanium
	140	232419314	Titanium
	150	232419315	Titanium
	160	232419316	Titanium
	170	232419317	Titanium
	180	232419318	Titanium
	200	232419320	Titanium
	240	232419324	Titanium
	250	232419325	Titanium
	280	232419328	Titanium
	300	232419330	Titanium
	400	232419340	Titanium

Posterior Lumbar Interbody Fusion System CanPEEK

PEEK PLIF Cage



Spec	Length	P.N	Material
8x22	7	253310007	P
8x22	9	253310009	P
8x22	11	253310011	P
8x22	13	253310013	P
8x22	15	253310015	P
8x22	17	253310017	P

PEEK PLIF Cage



Spec	Length	P.N	Material
8x24	7	253314007	P
8x24	9	253314009	P
8x24	11	253314011	P
8x24	13	253314013	P
8x24	15	253314015	P
8x24	17	253314017	P

PEEK PLIF Cage



Spec	Length	P.N	Material
10x22	7	253311007	P
10x22	9	253311009	P
10x22	11	253311011	P
10x22	13	253311013	P
10x22	15	253311015	P
10x22	17	253311017	P

PEEK PLIF Cage



Spec	Length	P.N	Material
10x24	7	253312007	P
10x24	9	253312009	P
10x24	11	253312011	P
10x24	13	253312013	P
10x24	15	253312015	P
10x24	17	253312017	P



Posterior Lumbar Interbody Fusion System CanPEEK

PEEK PLIF Cage



Spec	Length	P.N	Material
12x22	7	253315007	P
12x22	9	253315009	P
12x22	11	253315011	P
12x22	13	253315013	P
12x22	15	253315015	P
12x22	17	253315017	P

PEEK PLIF Cage



Spec	Length	P.N	Material
12x24	7	253315007	P
12x24	9	253315009	P
12x24	11	253315011	P
12x24	13	253315013	P
12x24	15	253315015	P
12x24	17	253315017	P

PEEK TLIF Cage



Spec	Length	P.N	Material
10x27	7	253410007	P
10x27	8	253410008	P
10x27	9	253410009	P
10x27	10	253410010	P
10x27	11	253410011	P
10x27	12	253410012	P
10x27	13	253410013	P
10x27	14	253410014	P
10x27	15	253410015	P
10x27	17	253410017	P

Anterior Cervical Interbody Fusion System CanPEEK-C

PEEK-C Cage, Wedge-shaped



Spec	Length	P.N	Material
15x12.5	5	253110050	P
	6	253110060	P
	7	253110070	P
	8	253110080	P
	9	253110090	P
	10	253110100	P

PEEK-C Cage, Curved



Spec	Length	P.N	Material
15x12.5	5	253120050	P
	6	253120060	P
	7	253120070	P
	8	253120080	P
	9	253120090	P
	10	253120100	P

## CanPKP Kyphoplasty Instrument Set



Kyphoplasty Balloon Catheter(15mm)



Guide Wire



Puncture Needle



Dilator



Drill Bit



Bone Filler Device



Protective Sleeve



Medical Balloon Catheter Syringe Pump

### CanPKP Kyphoplasty Instrument Set

SN	P.N	Name	Quantity
1	214200001	Kyphoplasty Balloon Catheter(15mm)	1
2	214200005	Puncture Needle	1
3	214200011	Kyphoplasty System Tool Kit	1
	214200004	Guide Wire	2
	214200006	Dilator	1
	214200012	Protective Sleeve	1
	214200007	Drill Bit	1
4	214200008	Bone Filler Device	4
5	214200009	Medical Balloon Catheter Syringe Pump	1

**Clavicle Plates**

**Small Locking Fragment Plating System SLP  
LCP Clavicle Hook Plate**

Matching Screw: 3.5mm Cortical Screw, 4.0mm Cancellous Screw ,3.5mm locking screws



Head thickness 2.5    Thickness 3.6    Head width 25.6    Width 11

Hole	Direction	P.N	Length	Material
4	Left	122236104	41mm	Titanium
5	Left	122236105	53mm	Titanium
6	Left	122236106	64mm	Titanium
7	Left	122236107	74mm	Titanium
4	Left	122236204	41mm	Titanium
5	Left	122236205	53mm	Titanium
6	Left	122236206	64mm	Titanium
7	Left	122236207	74mm	Titanium
4	Right	122236304	41mm	Titanium
5	Right	122236305	53mm	Titanium
6	Right	122236306	64mm	Titanium
7	Right	122236307	74mm	Titanium
4	Right	122236404	41mm	Titanium
5	Right	122236405	53mm	Titanium
6	Right	122236406	64mm	Titanium
7	Right	122236407	74mm	Titanium

**Small Locking Fragment Plating System SLP  
LCP Superior Anterior Clavicle with Lateral Extension  
Locking Plate**

Matching Screw: 3.5mm Cortical Screw, 4.0mm Cancellous Screw, 3.5mm locking screws, 3.5mm spacer, 2.4/2.7mm locking screw



Head thickness 3.0    Thickness 3.0    Head width 18    Width 10

Hole	Direction	P.N	Length	Material
3	Left	122264103	69mm	Titanium
4	Left	122264104	81mm	Titanium
5	Left	122264105	94mm	Titanium
6	Left	122264106	108mm	Titanium
7	Left	122264107	123mm	Titanium
8	Left	122264108	135mm	Titanium
3	Right	122264203	69mm	Titanium
4	Right	122264204	81mm	Titanium
5	Right	122264205	94mm	Titanium
6	Right	122264206	108mm	Titanium
7	Right	122264207	123mm	Titanium
8	Right	122264208	135mm	Titanium

**Small Locking Fragment Plating System SLP  
LCP Superior Anterior Clavicle Locking Plate**

Matching Screw: 3.5mm Cortical Screw, 4.0mm Cancellous Screw, 3.5mm locking screw, 3.5mm spacer



Hole	Direction	P.N	Length	Material
6	Left	122265106	94mm	Titanium
7	Left	122265107	110mm	Titanium
8	Left	122265108	120mm	Titanium
6	Right	122265206	94mm	Titanium
7	Right	122265207	110mm	Titanium
8	Right	122265208	120mm	Titanium

**Clavicle Plates**

**Small Locking Fragment Plating System SLP  
Clavicle Reconstruction Locking Plate**

Matching Screw:  
3.5mm Cortical Screw, 3.5mm locking screw, 3.5mm spacer



Hole	Direction	P.N	Length	Material
6	/	122232006	70.5mm	Titanium
8	/	122232008	94.5mm	Titanium
6	Left	122232306	70.5mm	Titanium
8	Left	122232308	94.5mm	Titanium
6	Left	122232106	70.5mm	Titanium
8	Left	122232108	94.5mm	Titanium
10	Left	122232110	118.5mm	Titanium
12	Left	122232112	142.5mm	Titanium
6	Right	122232406	70.5mm	Titanium
8	Right	122232408	94.5mm	Titanium
6	Right	122232206	70.5mm	Titanium
8	Right	122232208	94.5mm	Titanium
10	Right	122232210	118.5mm	Titanium
12	Right	122232212	142.5mm	Titanium

**Humerus Plates**

**Small Fragment Plating System SFP  
Distal Medial Humeral Plate**

Matching Screw: 3.5mm Cortical Screw, 4.0mm Cancellous Screw



Head thickness 1.5    Thickness 3.0    Head width 8.2    Width 8.2

Hole	P.N	Material
10	122133010	Titanium
11	122133011	Titanium
12	122133012	Titanium
13	122133013	Titanium
14	122133014	Titanium
15	122133015	Titanium
16	122133016	Titanium
17	122133017	Titanium
18	122133018	Titanium
19	122133019	Titanium
20	122133020	Titanium

**Small Locking Fragment Plating System SLP  
Proximal Humeral Locking Plate I**

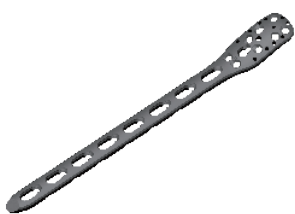
Matching Screw:  
3.5mm Cortical Screw, 4.0mm Cancellous Screw, 3.5mm locking screw



Hole	P.N	Length	Material
3	122238103	90mm	Titanium
4	122238104	102mm	Titanium
5	122238105	114mm	Titanium
6	122238106	126mm	Titanium
7	122238107	138mm	Titanium
8	122238108	150mm	Titanium
9	122238109	162mm	Titanium
10	122238110	174mm	Titanium
11	122238111	186mm	Titanium
12	122238112	198mm	Titanium
13	122238113	210mm	Titanium
14	122238114	222mm	Titanium

**Small Locking Fragment Plating System SLP  
Proximal Humeral Locking Plate II**

Matching Screw:  
3.5mm Cortical Screw, 4.0mm Cancellous Screw, 3.5mm locking screw



Head thickness 2    Thickness 4.2    Head width 22.85    Width 12.5

Hole	P.N	Length	Material
3	122238003	110mm	Titanium
4	122238004	128mm	Titanium
5	122238005	146mm	Titanium
6	122238006	164mm	Titanium
7	122238007	182mm	Titanium
8	122238008	200mm	Titanium
9	122238009	218mm	Titanium
10	122238010	236mm	Titanium
11	122238011	254mm	Titanium
12	122238012	272mm	Titanium
13	122238013	290mm	Titanium

## Humerus Plates

### Small Locking Fragment Plating System SLP Distal Lateral Dorsal Humeral Locking Plate (Buttress)

Matching Screw: 3.5mm Cortical Screw, 4.0mm Cancellous Screw,  
3.5mm locking screw, 3.5mm spacer, 2.4/2.7mm locking screw



Head thickness 2.5    Thickness 2.5    Head width 23.1    Width 12

Hole	Direction	P.N	Length	Material
3	Left	122243103	65mm	Titanium
5	Left	122243105	91mm	Titanium
7	Left	122243107	117mm	Titanium
9	Left	122243109	143mm	Titanium
14	Right	122243114	208mm	Titanium
3	Right	122243203	65mm	Titanium
5	Right	122243205	91mm	Titanium
7	Right	122243207	117mm	Titanium
9	Right	122243209	143mm	Titanium
14	Right	122243214	208mm	Titanium

### Small Locking Fragment Plating System SLP Distal Medial Humeral Locking Plate

Matching Screw: 3.5mm Cortical Screw, 4.0mm Cancellous Screw,  
3.5mm locking screw, 3.5mm spacer, 2.4/2.7mm locking screw



Head thickness 3.5    Thickness 3.5    Head width 11    Width 11

Hole	Direction	P.N	Length	Material
3	Left	122238103	59mm	Titanium
5	Left	122245105	84mm	Titanium
7	Left	122245107	110mm	Titanium
9	Left	122245109	136mm	Titanium
14	Left	122245114	201mm	Titanium
3	Right	122245203	59mm	Titanium
5	Right	122245205	84mm	Titanium
7	Right	122245207	110mm	Titanium
9	Right	122245209	136mm	Titanium
14	Right	122245214	201mm	Titanium

### Small Locking Fragment Plating System SLP Proximal Humeral Greater Tubercle Locking Plate

Matching Screw: 3.5mm Cortical Screw, 3.5mm locking Screw,  
3.5mm spacer



Hole	Direction	P.N	Length	Material
2	Left	122533102	66	Titanium
3	Left	122533103	78	Titanium
4	Left	122533104	90	Titanium
6	Left	122533106	114	Titanium
8	Left	122533108	138	Titanium
10	Left	122533110	162	Titanium
12	Left	122533112	186	Titanium
14	Left	122533114	210	Titanium
16	Left	122533116	234	Titanium
2	Right	122533202	66	Titanium
3	Right	122533203	78	Titanium
4	Right	122533204	90	Titanium
6	Right	122533206	114	Titanium
8	Right	122533208	138	Titanium
10	Right	122533210	162	Titanium
12	Right	122533212	186	Titanium
14	Right	122533214	210	Titanium
16	Right	122533216	234	Titanium

## Humerus Plates

### Small Locking Fragment Plating System SLP LCP-Distal Humeral extra-articular Locking Plate

Matching Screw: 3.5mm Cortical Screw, 3.5mm locking Screw,  
3.5mm spacer



Hole	Direction	P.N	Length	Material
4	Left	122262104	122	Titanium
6	Left	122262106	158	Titanium
8	Left	122262108	194	Titanium
10	Left	122262110	230	Titanium
12	Left	122262112	266	Titanium
14	Left	122262114	302	Titanium
4	Right	122262204	122	Titanium
6	Right	122262206	158	Titanium
8	Right	122262208	194	Titanium
10	Right	122262210	230	Titanium
12	Right	122262212	266	Titanium
14	Right	122262214	302	Titanium

### Small Locking Fragment Plating System SLP Distal Lateral Dorsal Humeral Plate

Matching Screw: 3.5mm Cortical Screw, 4.0mm Cancellous Screw,  
3.5mm locking screw, 3.5mm spacer, 2.4/2.7mm locking screw



Head thickness    Thickness    Head width    Width  
2.5                    2.5                    14.2            11

Hole	Direction	P.N	Length	Material
3	Left	122244103	65mm	Titanium
5	Left	122244105	91mm	Titanium
7	Left	122244107	117mm	Titanium
9	Left	122244109	143mm	Titanium
14	Left	122244114	208mm	Titanium
3	Right	122244203	65mm	Titanium
5	Right	122244205	91mm	Titanium
7	Right	122244207	117mm	Titanium
9	Right	122244209	143mm	Titanium
14	Right	122244214	208mm	Titanium

### Small Locking Fragment Plating System SLP LCP-Distal Humeral middle metaphyseal locking plate

Matching Screw: 3.5mm Cortical Screw, 4.0mm Cancellous Screw,  
3.5mm locking screw, 3.5mm spacer



Head thickness    Thickness    Head width    Width  
1.4                    3.2                    11                    11.5

Hole	P.N	Length	Material
7	122263007	80mm	Titanium
9	122263009	106mm	Titanium
11	122263011	132mm	Titanium
13	122263013	158mm	Titanium
15	122263015	184mm	Titanium



**Radius Plates**

**Small Locking Fragment Plating System SLP  
3.5mm LCP T-Plate, Right-angled( head 4holes)**

Matching Screw: 3.5mm Cortical Screw, 4.0mm Cancellous Screw, 3.5mm locking screw



Head thickness    Thickness    Head width    Width  
1.6                1.6                31                11

Hole	P.N	Length	Material
3	122220003	47mm	Titanium
4	122220004	58mm	Titanium
5	122220005	69mm	Titanium
6	122220006	80mm	Titanium

**Small Locking Fragment Plating System SLP  
3.5mm LCP T-Plate, Oblique-angled( head 3holes)**

Matching Screw: 3.5mm Cortical Screw, 4.0mm Cancellous Screw, 3.5mm locking screw



Head thickness    Thickness    Head width    Width  
1.6                1.6                23                10

Hole	Direction	P.N	Length	Material
3	Left	122221103	52mm	Titanium
4	Left	122221104	63mm	Titanium
5	Left	122221105	74mm	Titanium
3	Right	122221203	52mm	Titanium
4	Right	122221204	63mm	Titanium
5	Right	122221205	74mm	Titanium

**Small Locking Fragment Plating System SLP  
3.5mm LCP T-Plate, Right-angled( head 3holes)**

Matching Screw: 3.5mm Cortical Screw, 4.0mm Cancellous Screw, 3.5mm locking screw



Head thickness    Thickness    Head width    Width  
1.6                1.6                24                10

Hole	P.N	Length	Material
3	122222003	46.5mm	Titanium
4	122222004	57.5mm	Titanium
5	122222005	68.5mm	Titanium
6	122222006	79.5mm	Titanium

**Small Locking Fragment Plating System SLP  
LCP Distal Radius Locking Plate**

Matching screw: 2.4/2.7mm locking screw, 2.4mm Cortical Screw



Hole	P.N	Length	Material
8	122261008	100mm	Titanium
10	122261010	120mm	Titanium
12	122261012	140mm	Titanium

**Radius Plates**

**Small Locking Fragment Plating System SLP  
VA LCP Distal Palmar Radius two-column Locking Plate  
( head 6 holes)**

MatchingScrew:2.4/2.7mmlockingscrew,2.4mmVAlockingscrew,  
2.4mmCorticalScrew



Head thickness 2.2 Thickness 2.2 Head width 22 Width 7.5

Hole	Direction	P.N	Length	Material
2	Left	122323102	45mm	Titanium
3	Left	122323103	54mm	Titanium
4	Left	122323104	66mm	Titanium
5	Left	122323105	75mm	Titanium
2	Right	122323202	45mm	Titanium
3	Right	122323203	54mm	Titanium
4	Right	122323204	66mm	Titanium
5	Right	122323205	75mm	Titanium

**2.4/2.7Locking Screw Instruments Set  
LCP Proximal Radius Arch(collum radii) Locking Plate**

MatchingScrew:2.4/2.7mmlockingscrew,2.4mmCorticalScrew



Head thickness 1.6 Thickness 1.6 Head width 16 Width 8

Hole	P.N	Length	Material
2	121236002	32mm	Titanium
3	121236003	41mm	Titanium
4	121236004	50mm	Titanium

**2.4/2.7Locking Screw Instruments Set  
LCP Proximal Radius Arch(collum radii) Locking Plate**

MatchingScrew:2.4/2.7mmlockingscrew,2.4mmCorticalScrew



Head thickness 1.6 Thickness 1.6 Head width 15.3 Width 8

Hole	Direction	P.N	Length	Material
2	Left	121237002	37.5mm	Titanium
3	Left	121237003	46.5mm	Titanium
4	Left	121237004	55.5mm	Titanium
2	Right	121237102	37.5mm	Titanium
3	Right	121237103	46.5mm	Titanium
4	Right	121237104	55.5mm	Titanium

**2.4/2.7Locking Screw Instruments Set  
LCP Proximal Radius Arch(collum radii) Locking Plate**

MatchingScrew:2.4/2.7mmlockingscrew,2.4mmCorticalScrew



Hole	Direction	P.N	Length	Material
3	Left	122277103	40mm	Titanium
4	Left	122277104	49mm	Titanium
3	Right	122277203	40mm	Titanium
4	Right	122277204	49mm	Titanium

**Radius Plates**

**Small Locking Fragment Plating System SLP  
LCP Distal Dorsal Radius Locking L-Plate**

Matching Screw: 2.4/2.7mm locking screw, 2.4mm Cortical Screw



Hole	Direction	P.N	Length	Material
3	Left	122277103	40mm	Titanium
4	Left	122277104	49mm	Titanium
3	Right	122277203	40mm	Titanium
4	Right	122277204	49mm	Titanium

**Small Locking Fragment Plating System SLP  
LCP Distal Dorsal Radius Locking L-Plate**

Matching Screw: 2.4/2.7mm locking screw, 2.4mm Cortical Screw



Hole	Direction	P.N	Length	Material
3	Left	122276103	43mm	Titanium
4	Left	122276104	52mm	Titanium
3	Right	122276203	43mm	Titanium
4	Right	122276204	52mm	Titanium

**Small Locking Fragment Plating System SLP  
LCP Distal Dorsal Radius Locking L-Plate**

Matching Screw: 2.4/2.7mm locking screw, 2.4mm Cortical Screw



Hole	P.N	Length	Material
3	122278003	40mm	Titanium
4	122278004	49mm	Titanium

**Small Locking Fragment Plating System SLP  
LCP Distal Dorsal Radius Locking Plate**

Matching Screw: 2.4/2.7mm locking screw, 2.4mm Cortical Screw



Hole	P.N	Length	Material
5	122292005	48mm	Titanium
6	122292006	57mm	Titanium

**Radius Plates**

**Variable Angle Locking Compression Plate(Distal Radius)VLP  
VA LCP Distal Palmar Radius two-column Locking Plate  
( head 7 holes)**

Matching Screw: 2.4/2.7mm locking screw, 2.4mm VA locking screw,  
2.4mm Cortical Screw



Hole	Direction	P.N	Length	Material
2	Left	122325102	47mm	Titanium
3	Left	122325103	55mm	Titanium
4	Left	122325104	68mm	Titanium
5	Left	122325105	77mm	Titanium
7	Left	122325107	95mm	Titanium
9	Left	122325109	113mm	Titanium
11	Left	122325111	131mm	Titanium
2	Right	122325202	47mm	Titanium
3	Right	122325203	55mm	Titanium
4	Right	122325204	68mm	Titanium
5	Right	122325205	77mm	Titanium
7	Right	122325207	95mm	Titanium
9	Right	122325209	113mm	Titanium
11	Right	122325211	131mm	Titanium

**Small Locking Fragment Plating System SLP  
Distal radius volar locking plate**

Matching Screw: 2.4/2.7mm locking screw, 3.5mm locking screw,  
3.5mm Cortical Screw



Hole	Direction	P.N	Length	Material
3	Left	121238103	51mm	Titanium
4	Left	121238104	56.6mm	Titanium
7	Left	121238107	89mm	Titanium
10	Left	121238110	140mm	Titanium
12	Left	121238112	175mm	Titanium
3	Right	121238203	51mm	Titanium
4	Right	121238204	56.6mm	Titanium
7	Right	121238207	89mm	Titanium
10	Right	121238210	140mm	Titanium
12	Right	121238212	175mm	Titanium

Head thickness    Thickness    Head width    Width  
1.4                    3.2                    11                    11.5

Ulna Plates

Small Locking Fragment Plating System SLP  
LCP Olecranon Locking Plate

Matching Screw:  
3.5mm Cortical Screw, 4.0mm Cancellous Screw,  
3.5mm locking screw, 3.5mm spacer



Head thickness    Thickness    Head width    Width  
2.5                    2.5                    15                    11

Hole	Direction	P.N	Length	Material
2	Left	122240102	86mm	Titanium
4	Left	122240104	112mm	Titanium
6	Left	122240106	138mm	Titanium
8	Left	122240108	163mm	Titanium
10	Left	122240110	190mm	Titanium
12	Left	122240112	216mm	Titanium
2	Right	122240202	86mm	Titanium
4	Right	122240204	112mm	Titanium
6	Right	122240206	138mm	Titanium
8	Right	122240208	163mm	Titanium
10	Right	122240210	190mm	Titanium
12	Right	122240212	216mm	Titanium

Mini Locking Fragment Plating System MLP  
LCP Distal Ulna Hook Locking Plate

Matching Screw:  
2.0mm locking screw, 2.0mm Cortical Screw



Head thickness    Thickness    Head width    Width  
/                    1.8                    5                    5

Hole	P.N	Length	Material
7	121235007	46mm	Titanium

**Calcaneus Plates**

**Small Fragment Plating System SFP**

**Calcaneal Plate - I**

Matching Screw: 3.5mm Cortical Screw, 4.0mm Cancellous Screw SFP



Head thickness	Thickness	Head width	Width
1.5	1.5	41.7	20.5

Hole	P.N	Length	Material
14	122152060	60mm	Titanium
14	122152070	70mm	Titanium

**Small Fragment Plating System SFP**

**Calcaneal Locking Plate-IV**

Matching Screw: 3.5mm Cortical Screw, 4.0mm Cancellous Screw



Hole	P.N	Length	Material
8	122156008	48mm	Titanium
10	122156012	58mm	Titanium
12	122156112	65mm	Titanium

**Small Locking Fragment Plating System SLP**

**Calcaneal Locking plate**

Matching Screw: 3.5mm Cortical Screw, 4.0mm Cancellous Screw, 3.5mm Locking Screw



Head thickness	Thickness	Head width	Width
/	2	/	54

Hole	Direction	P.N	Length	Material
15	Left	122234169	69mm	Titanium
15	Left	122234176	76mm	Titanium
15	Right	122234269	69mm	Titanium
15	Right	122234276	76mm	Titanium

**Small Locking Fragment Plating System SLP**

**Calcaneal Locking plate**

Matching Screw: 3.5mm Cortical Screw, 4.0mm Cancellous Screw, 3.5mm Locking Screw



Head thickness	Thickness	Head width	Width
/	2	/	54

Hole	Direction	P.N	Length	Material
8	Left	122291103	53mm	Titanium
8	Right	122291203	53mm	Titanium
12	left	122291101	60mm	Titanium
12	Right	122291201	60mm	Titanium

Femur Plates

Dynamic Hip and Condylar System DHS-DCS  
DHS Plate 135°, with LC-undercuts

Matching Screw: 4.5mm Cortical Screw, 6.5mm Cancellous Screw



Hole	P.N	Length	Material
2	124111102	52mm	Titanium
3	124111103	68mm	Titanium
4	124111104	84mm	Titanium
5	124111105	100mm	Titanium
6	124111106	116mm	Titanium
8	124111108	148mm	Titanium
10	124111110	180mm	Titanium
12	124111112	212mm	Titanium
14	124111114	244mm	Titanium
16	124111116	276mm	Titanium

Dynamic Hip and Condylar System DHS-DCS  
DHS Plate 95°, with LC-undercuts

Matching Screw: 4.5mm Cortical Screw, 6.5mm Cancellous Screw



Hole	P.N	Length	Material
4	124113104	117mm	Titanium
6	124113106	149mm	Titanium
8	124113108	181mm	Titanium
10	124113110	213mm	Titanium
12	124113112	245mm	Titanium

Dynamic Hip and Condylar System DHS-DCS  
DHS/DCS Screw, with compression screw



P.N	Length	Material
134115050	50mm	Titanium
134115055	55mm	Titanium
134115060	60mm	Titanium
134115065	65mm	Titanium
134115070	70mm	Titanium
134115075	75mm	Titanium
134115080	80mm	Titanium
134115085	85mm	Titanium
134115090	90mm	Titanium
134115095	95mm	Titanium
134115100	100mm	Titanium
134115105	105mm	Titanium
134115110	110mm	Titanium

Dynamic Hip and Condylar System DHS-DCS  
Lag Screw



P.N	Material
124116000	Titanium

**Femur Plates**

**Large Locking Fragment Plating System LLP  
4.5mm Locking Compression Plate(broad, LC-LCP)**

Matching Screw:  
4.5mm Cortical Screw, 6.5mm Cancellous Screw, 5.0mm Locking Screw



Head thickness    Thickness    Head width    Width  
2.8                    5.2                    17.5            17.5

Hole	P.N	Length	Material
5	123221005	98mm	Titanium
6	123221006	116mm	Titanium
7	123221007	134mm	Titanium
8	123221008	152mm	Titanium
9	123221009	170mm	Titanium
10	123221010	188mm	Titanium
11	123221011	206mm	Titanium
12	123221012	224mm	Titanium
13	123221013	242mm	Titanium
14	123221014	260mm	Titanium
15	123221015	278mm	Titanium
16	123221016	296mm	Titanium
17	123221017	314mm	Titanium
18	123221018	332mm	Titanium

**Large Locking Fragment Plating System LLP  
Distal Lateral Femoral Locking Plate**

Matching Screw:  
4.5mm Cortical Screw, 6.5mm Cancellous Screw, 5.0mm Locking Screw



Head thickness    Thickness    Head width    Width  
2.8                    5.5                    35                    16.5

Hole	Direction	P.N	Length	Material
5	Left	123230105	155mm	Titanium
7	Left	123230107	195mm	Titanium
9	Left	123230109	235mm	Titanium
11	Left	123230111	275mm	Titanium
13	Left	123230113	315mm	Titanium
5	Right	123230205	155mm	Titanium
7	Right	123230207	195mm	Titanium
9	Right	123230209	235mm	Titanium
11	Right	123230211	275mm	Titanium
13	Right	123230213	315mm	Titanium

**Large Locking Fragment Plating System LLP  
Distal Lateral Femoral LISS Plate**

Matching Screw:  
4.5mm Cortical Screw, 6.5mm Cancellous Screw,  
5.0mm Locking Screw, 5.0mm spacer



Head thickness    Thickness    Head width    Width  
2.8                    5.5                    35                    16.5

Hole	Direction	P.N	Length	Material
5	Left	123421105	155mm	Titanium
7	Left	123421107	195mm	Titanium
9	Left	123421109	235mm	Titanium
11	Left	123421111	275mm	Titanium
13	Left	123421113	315mm	Titanium
5	Right	123421205	155mm	Titanium
7	Right	123421207	195mm	Titanium
9	Right	123421209	235mm	Titanium
11	Right	123421211	275mm	Titanium
13	Right	123421213	315mm	Titanium

**Large Locking Fragment Plating System LLP  
LCP Proximal Femoral Locking Plate**

Matching Screw:  
4.5mm Cortical Screw, 6.5mm Cancellous Screw, 5.0mm Locking Screw,  
5.0mm spacer



Head thickness    Thickness    Head width    Width  
3.0                    5.6                    25.4            17.5

Hole	Direction	P.N	Length	Material
4	Left	123228304	175mm	Titanium
6	Left	123228306	211mm	Titanium
8	Left	123228308	247mm	Titanium
10	Left	123228310	283mm	Titanium
12	Left	123228312	319mm	Titanium
4	Right	123228404	175mm	Titanium
6	Right	123228406	211mm	Titanium
8	Right	123228408	247mm	Titanium
10	Right	123228410	283mm	Titanium
12	Right	123228412	319mm	Titanium



**Tibia Plates**

**Small Locking Fragment Plating System SLP™**

**Distal Lateral Tibial Locking Plate**

Matching Screw: 3.5mm Cortical Screw, 4.0mm Cancellous Screw, 3.5mm Locking Screw



Head thickness	Thickness	Head width	Width
2	3.6	41.5	13.5

Hole	Direction	P.N	Length	Material
5	Left	122235105	80mm	Titanium
7	Left	122235107	106mm	Titanium
9	Left	122235109	132mm	Titanium
11	Left	122235111	158mm	Titanium
13	Left	122235113	184mm	Titanium
15	Left	122235115	210mm	Titanium
17	Left	122235117	236mm	Titanium
19	Left	122235119	262mm	Titanium
21	Left	122235121	288mm	Titanium
5	Right	122235205	80mm	Titanium
7	Right	122235207	106mm	Titanium
9	Right	122235209	132mm	Titanium
11	Right	122235211	158mm	Titanium
13	Right	122235213	184mm	Titanium
15	Right	122235215	210mm	Titanium
17	Right	122235217	236mm	Titanium
19	Right	122235219	262mm	Titanium
21	Right	122235221	288mm	Titanium

**Small Locking Fragment Plating System SLP**

**3.5mm LCP Distal Medial Tibial Plate**

Matching Screw: 3.5mm Cortical Screw 4.0mm Cancellous Screw 3.5mm Locking Screw



Head thickness	Thickness	Head width	Width
2.2	4	22.5	11

Hole	Direction	P.N	Length	Material
4	Left	122237104	117mm	Titanium
6	Left	122237106	144mm	Titanium
8	Left	122237108	171mm	Titanium
10	Left	122237110	198mm	Titanium
12	Left	122237112	225mm	Titanium
14	Left	122237114	252mm	Titanium
4	Right	122237204	117mm	Titanium
6	Right	122237206	144mm	Titanium
8	Right	122237208	171mm	Titanium
10	Right	122237210	198mm	Titanium
12	Right	122237212	225mm	Titanium
14	Right	122237214	252mm	Titanium

**Small Locking Fragment Plating System SLP**

**Proximal Lateral Tibial Locking Plate I**

Matching Screw: 3.5mm Cortical Screw 4.0mm Cancellous Screw, 3.5mm Locking Screw, 3.5mm Spacer



Head thickness	Thickness	Head width	Width
2.0	3.6	33.5	11

Hole	Direction	P.N	Length	Material
4	Left	122253104	83mm	Titanium
6	Left	122253106	109mm	Titanium
8	Left	122253108	135mm	Titanium
10	Left	122253110	161mm	Titanium
12	Left	122253112	187mm	Titanium
14	Left	122253114	213mm	Titanium
16	Left	122253116	239mm	Titanium
4	Right	122253204	83mm	Titanium
6	Right	122253206	109mm	Titanium
8	Right	122253208	135mm	Titanium
10	Right	122253210	161mm	Titanium
12	Right	122253212	187mm	Titanium
14	Right	122253214	213mm	Titanium
16	Right	122253216	239mm	Titanium

**Tibia Plates**

**Small Locking Fragment Plating System SLP  
LCP Distal Medial Tibial Plate**

Matching Screw: 3.5mm Cortical Screw, 4.0mm Cancellous Screw,  
3.5mm Locking Screw, 3.5mm Spacer



Head thickness 2.2    Thickness 4.2    Head width 20.5    Width 11.5

Hole	Direction	P.N	Length	Material
4	Left	122267104	109mm	Titanium
6	Left	122267106	135mm	Titanium
8	Left	122267108	161mm	Titanium
10	Left	122267110	187mm	Titanium
12	Left	122267112	213mm	Titanium
14	Left	122267114	239mm	Titanium
4	Right	122267204	109mm	Titanium
6	Right	122267206	135mm	Titanium
8	Right	122267208	161mm	Titanium
10	Right	122267210	187mm	Titanium
12	Right	122267212	213mm	Titanium
14	Right	122267214	239mm	Titanium

**Small Locking Fragment Plating System SLP  
LCP Proximal Medial Tibial Locking Plate**

Matching Screw: 3.5mm Cortical Screw, 3.5mm Locking Screw



Hole	Direction	P.N	Length	Material
4	Left	122266104	60mm	Titanium
6	Left	122266106	84mm	Titanium
8	Left	122266108	108mm	Titanium
4	Right	122266204	60mm	Titanium
6	Right	122266206	84mm	Titanium
8	Right	122266208	108mm	Titanium

**Small Locking Fragment Plating System SLP  
LCP Proximal Posterior Tibial Locking Plate**

Matching Screw: 3.5mm Cortical Screw, 3.5mm Locking Screw



Hole	P.N	Length	Material
1	122255001	69mm	Titanium
2	122255002	79mm	Titanium
4	122255004	105mm	Titanium
6	122255006	131mm	Titanium

**Large Locking Fragment Plating System LLP  
Proximal Lateral Tibial Locking Plate II**

Matching Screw: 4.5mm Cortical Screw,  
6.5mm Cancellous Screw 5.0mm Locking Screw



Head thickness 2.2    Thickness 4.2    Head width 20.5    Width 11.5

Hole	Direction	P.N	Length	Material
4	Left	123232104	82mm	Titanium
5	Left	123232105	100mm	Titanium
6	Left	123232106	118mm	Titanium
7	Left	123232107	136mm	Titanium
8	Left	123232108	154mm	Titanium
9	Left	123232109	172mm	Titanium
10	Left	123232110	190mm	Titanium
12	Left	123232112	226mm	Titanium
14	Left	123232114	262mm	Titanium
4	Right	123232204	82mm	Titanium
5	Right	123232205	100mm	Titanium
6	Right	123232206	118mm	Titanium
7	Right	123232207	136mm	Titanium
8	Right	123232208	154mm	Titanium
9	Right	123232209	172mm	Titanium
10	Right	123232210	190mm	Titanium
12	Right	123232212	226mm	Titanium
14	Right	123232214	262mm	Titanium

**Tibia Plates**

**Large Locking Fragment Plating System LLP  
Proximal Tibial Locking Plate**

Matching Screw: 4.5mm Cortical Screw,  
6.5mm Cancellous Screw 5.0mm Locking Screw



Head thickness	Thickness	Head width	Width
3	4.8	39.3	15.5

Hole	Direction	P.N	Length	Material
3	Left	123233103	105mm	Titanium
5	Left	123233105	145mm	Titanium
7	Left	123233107	185mm	Titanium
9	Left	123233109	225mm	Titanium
11	Left	123233111	265mm	Titanium
13	Left	123233113	305mm	Titanium
3	Right	123233203	105mm	Titanium
5	Right	123233205	145mm	Titanium
7	Right	123233207	185mm	Titanium
9	Right	123233209	225mm	Titanium
11	Right	123233211	265mm	Titanium
13	Right	123233213	305mm	Titanium

**Large Locking Fragment Plating System LLP  
Proximal Lateral Tibial LISS Plate**

Matching Screw: 4.5mm Cortical Screw, 6.5mm Cancellous Screw,  
5.0mm Locking Screw, 5.0mm Locking Screw (Self-drilling and self-tapping),  
5.0mm Spacer



Head thickness	Thickness	Head width	Width
7	4.8	21.5	16

Hole	Direction	P.N	Length	Material
5	Left	123420105	141mm	Titanium
7	Left	123420107	181mm	Titanium
9	Left	123420109	221mm	Titanium
11	Left	123420111	261mm	Titanium
13	Left	123420113	301mm	Titanium
5	Right	123420205	141mm	Titanium
7	Right	123420207	181mm	Titanium
9	Right	123420209	221mm	Titanium
11	Right	123420211	261mm	Titanium
13	Right	123420213	301mm	Titanium

**Large Locking Fragment Plating System LLP  
LCP Proximal Middle Tibial Locking Plate**

Matching Screw: 4.5mm Cortical Screw, 6.5mm Cancellous Screw, 5.0mm Locking



Head thickness	Thickness	Head width	Width
1.9	3.5	33	12

Hole	Direction	P.N	Length	Material
4	Left	123247104	106mm	Titanium
6	Left	123247106	142mm	Titanium
8	Left	123247108	178mm	Titanium
10	Left	123247110	214mm	Titanium
12	Left	123247112	250mm	Titanium
14	Left	123247114	286mm	Titanium
16	Left	123247116	322mm	Titanium
4	Right	123247204	106mm	Titanium
6	Right	123247206	142mm	Titanium
8	Right	123247208	178mm	Titanium
10	Right	123247210	214mm	Titanium
12	Right	123247212	250mm	Titanium
14	Right	123247214	286mm	Titanium
16	Right	123247216	322mm	Titanium

**Large Locking Fragment Plating System CLLP  
LCP Distal Lateral Tibial Plate**

Matching Screw: 4.5mm Cortical Screw, 6.5mm Cancellous Screw



Hole	Direction	P.N	Length	Material
5	Left	123250105	117mm	Titanium
7	Left	123250107	153mm	Titanium
9	Left	123250109	189mm	Titanium
11	Left	123250111	225mm	Titanium
13	Left	123250113	261mm	Titanium
5	Right	123250205	117mm	Titanium
7	Right	123250207	153mm	Titanium
9	Right	123250209	189mm	Titanium
11	Right	123250211	225mm	Titanium
13	Right	123250213	261mm	Titanium

**Fibula Plates**

**Small Locking Fragment Plating System SLP  
LCP Distal Lateral Fibular Locking Plate**

Matching Screw: 3.5mm Cortical Screw, 4.0mm Cancellous Screw,  
3.5mm Locking Screw, 3.5mm Spacer, 2.4/2.7mm Locking Screw



Head thickness 2.5    Thickness 2.5    Head width 14    Width 9.5

Hole	Direction	P.N	Length	Material
3	Left	122242103	73mm	Titanium
4	Left	122242104	86mm	Titanium
5	Left	122242105	99mm	Titanium
6	Left	122242106	112mm	Titanium
7	Left	122242107	125mm	Titanium
3	Right	122242203	73mm	Titanium
4	Right	122242204	86mm	Titanium
5	Right	122242205	99mm	Titanium
6	Right	122242206	112mm	Titanium
7	Right	122242207	125mm	Titanium

**2.4/2.7 Locking Fragment Plate System  
LCP Distal Posterior Lateral Fibula Locking Plate**

Matching Screw: 2.4mm locking Screw, 2.7mm locking Screw,  
3.5mm locking Screw, 3.5mm Cortical Screw



Hole	Direction	P.N	Length	Material
3	Left	122241103	77mm	Titanium
4	Left	122241104	90mm	Titanium
5	Left	122241105	103mm	Titanium
6	Left	122241106	116mm	Titanium
7	Left	122241107	129mm	Titanium
3	Right	122241203	77mm	Titanium
4	Right	122241204	90mm	Titanium
5	Right	122241205	103mm	Titanium
6	Right	122241206	116mm	Titanium
7	Right	122241207	129mm	Titanium

**Pelvis Plates**

**Small Fragment Plating System Can  
3.5mm Reconstruction Plate, curved**

Matching Screw: 3.5mm Cortical Screw, 4.0mm Cancellous Screw



Head thickness 3.0    Thickness 3.0    Head width 10    Width 10

Hole	P.N	Length	Material
6	122151006	71mm	Titanium
8	122151008	93.5mm	Titanium
10	122151010	115mm	Titanium
12	122151012	135mm	Titanium
14	122151014	154mm	Titanium
16	122151016	171mm	Titanium
18	122151018	186mm	Titanium
20	122151020	199mm	Titanium

**Small Locking Fragment Plating System CanSLP  
Pelvic Reconstruction Locking Plate, curved**

Matching Screw: 3.5mm Cortical Screw,  
4.0mm Cancellous Screw, 3.5mm Locking Screw



Hole	P.N	Material
6	122298006	Titanium
8	122298008	Titanium
10	122298010	Titanium
12	122298012	Titanium
14	122298014	Titanium
16	122298016	Titanium

## Multifunctional Plates

### Small Locking Fragment Plating System SLP LCP 1/3 Tubular Locking Plate

Matching Screw: 3.5mm locking Screw



Head thickness 3.2    Thickness 3.2    Head width 11.5    Width 11.5

Hole	P.N	Length	Material
4	122247004	52mm	Titanium
5	122247005	64mm	Titanium
6	122247006	76mm	Titanium
7	122247007	88mm	Titanium
8	122247008	100mm	Titanium
9	122247009	112mm	Titanium
10	122247010	124mm	Titanium
12	122247012	148mm	Titanium
14	122247014	172mm	Titanium

### Small Locking Fragment Plating System SLP 3.5mm Reconstruction Locking Plate, straight

Matching Screw: 3.5mm Cortical Screw,  
4.0mm Cancellous Screw, 3.5mm Locking Screw



Head thickness 3.2    Thickness 3.2    Head width 10.5    Width 10.5

Hole	P.N	Length	Material
4	122224004	56mm	Titanium
5	122224005	70mm	Titanium
6	122224006	84mm	Titanium
7	122224007	98mm	Titanium
8	122224008	112mm	Titanium
9	122224009	126mm	Titanium
10	122224010	140mm	Titanium
11	122224011	154mm	Titanium
12	122224012	168mm	Titanium
13	122224013	182mm	Titanium
14	122224014	196mm	Titanium
16	122224016	224mm	Titanium
18	122224018	252mm	Titanium
20	122224020	280mm	Titanium
22	122224022	308mm	Titanium

### Small Locking Fragment Plating System SLP 3.5mm Locking Compression Plate(narrow, LC-LCP)

Matching Screw: 3.5mm Cortical Screw,  
4.0mm Cancellous Screw, 3.5mm Locking Screw



Head thickness 3.2    Thickness 3.2    Head width 11.5    Width 11.5

Hole	P.N	Length	Material
4	122226004	59mm	Titanium
5	122226005	72mm	Titanium
6	122226006	85mm	Titanium
7	122226007	98mm	Titanium
8	122226008	111mm	Titanium
9	122226009	124mm	Titanium
10	122226010	137mm	Titanium
11	122226011	150mm	Titanium
12	122226012	163mm	Titanium

### Small Locking Fragment Plating System SLP 3.5mm Metaphysis Locking Plate

Matching Screw: 3.5mm Cortical Screw, 4.0mm Cancellous Screw,  
3.5mm Locking Screw, 3.5mm Spacer



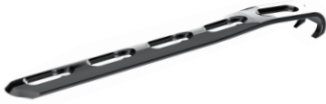
Head thickness 3.2    Thickness 3.2    Head width 11.5    Width 11.5

Hole	P.N	Length	Material
6	122246006	86mm	Titanium
7	122246007	99mm	Titanium
8	122246008	112mm	Titanium
9	122246009	125mm	Titanium
10	122246010	138mm	Titanium
11	122246011	151mm	Titanium
12	122246012	164mm	Titanium
14	122246014	190mm	Titanium
16	122246016	216mm	Titanium
18	122246018	242mm	Titanium

**Multifunctional Plates**

**Small Locking Fragment Plating System SLP  
LCP Hook Locking Plate**

Matching Screw: 3.5mm Cortical Screw,  
4.0mm Cancellous Screw, 3.5mm Locking Screw

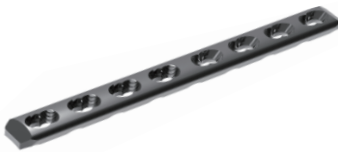


Head thickness / Thickness Head width Width  
/ 1.6 11 11

Hole	P.N	Length	Material
3	122239003	62mm	Titanium
4	122239004	80mm	Titanium
5	122239005	98mm	Titanium

**Large Locking Fragment Plating System LLP  
4.5mm Locking Compression Plate(narrow, LC-LCP)**

Matching Screw: 4.5mm Cortical Screw,  
6.5mm Cancellous Screw 5.0mm Locking Screw



Head thickness Thickness Head width Width  
2.8 4.8 13.5 13.5

Hole	P.N	Length	Material
5	123222005	98mm	Titanium
6	123222006	116mm	Titanium
7	123222007	134mm	Titanium
8	123222008	152mm	Titanium
9	123222009	170mm	Titanium
10	123222010	188mm	Titanium
11	123222011	206mm	Titanium
12	123222012	224mm	Titanium
13	123222013	242mm	Titanium
14	123222014	260mm	Titanium
15	123222015	278mm	Titanium
16	123222016	296mm	Titanium

**Large Locking Fragment Plating System LLP  
3.5/4.5mm Metaphysis Locking Plate**

Matching Screw: 3.5mm Cortical Screw, 4.0mm Cancellous Screw,  
3.5mm Locking Screw, 4.5mm Cortical Screw, 6.5 mm Cancellous Screw,  
5.0mm Locking Screw



Head thickness Thickness Head width Width  
2.3 4.8 / 13.5

Hole	P.N	Length	Material
3	123220003	118mm	Titanium
4	123220004	136mm	Titanium
5	123220005	154mm	Titanium
6	123220006	172mm	Titanium
7	123220007	190mm	Titanium
8	123220008	208mm	Titanium
9	123220009	226mm	Titanium
11	123220011	262mm	Titanium
13	123220013	298mm	Titanium
15	123220015	334mm	Titanium

Mini Plates

Mini Fragment Plating System MFP  
2.0mm T-Plate(head 3 holes)

Matching Screw:2.0mm Cortex Screw



Head thickness Thickness Head width Width  
0.8 0.8 16.2 5

Hole	P.N	Length	Material
4	121133004	29.5mm	Titanium
5	121133005	29.5mm	Titanium
6	121133006	42mm	Titanium
7	121133007	42mm	Titanium
8	121133008	54.5mm	Titanium

Mini Fragment Plating System MFP  
2.0mm Tubular Plate

Matching Screw:2.0mm Cortex Screw



Head thickness Thickness Head width Width  
1.2 1.2 5.5 5.5

Hole	P.N	Length	Material
2	121121002	11mm	Titanium
3	121121003	17mm	Titanium
4	121121004	23mm	Titanium
5	121121005	29mm	Titanium
6	121121006	35mm	Titanium
7	121121007	41mm	Titanium

Mini Fragment Plating System MFP  
2.4mm Reconstruction Plate

Matching Screw:2.4mm Cortex Screw



Head thickness Thickness Head width Width  
1.6 1.6 6.5 6.5

Hole	P.N	Length	Material
4	121120004	25.5mm	Titanium
5	121120005	32.0mm	Titanium
6	121120006	38.5mm	Titanium

Mini Fragment Plating System MFP  
2.5mm T-Plate

Matching Screw:2.4mm Cortex Screw



Head thickness Thickness Head width Width  
1.2 1.6 13 5.5

Hole	P.N	Length	Material
2	121130002	19mm	Titanium
3	121130003	28mm	Titanium
4	121130004	36mm	Titanium
5	121130005	43mm	Titanium



**Mini Plates**

**Mini Fragment Plating System MFP**

**2.0mm T-Plate**

Matching Screw: 2.0mm Cortex Screw



Head thickness 0.8    Thickness 0.8    Head width 10.92    Width 5.5

Hole	P.N	Length	Material
2	121130102	19mm	Titanium
3	121130103	28mm	Titanium
4	121130104	36mm	Titanium
5	121130105	36mm	Titanium

**Mini Fragment Plating System MFP**

**2.0mm T-Plate**

Matching Screw: 2.0mm Cortex Screw



Head thickness 0.8    Thickness 0.8    Head width 10.8    Width 5.5

Hole	Direction	P.N	Length	Material
4	Left	121131004	19mm	Titanium
5	Right	121131005	25mm	Titanium
4	Left	121131104	19mm	Titanium
5	Right	121131105	25mm	Titanium

**Mini Locking Fragment Plating System MLP**

**LCP Mini Locking Plate(Y-shape)**

Matching Screw: 2.4mm Locking Screw



Head thickness 1.3    Thickness 1.8    Head width 19.2    Width 6.5

Hole	P.N	Length	Material
4	121233004	38.2mm	Titanium
5	121233005	45.5mm	Titanium
6	121233006	52.7mm	Titanium
7	121233007	60mm	Titanium

**Mini Fragment Plating System MLP**

**LCP Mini Locking Plate(T-shape)**

Matching Screw: 2.4mm Locking Screw



Head thickness 1.3    Thickness 1.8    Head width 19.2    Width 6.5

Hole	P.N	Length	Material
4	121234004	35.2mm	Titanium
5	121234005	42.5mm	Titanium
6	121234006	49.7mm	Titanium
7	121234007	57mm	Titanium

**Mini Plates**

**Mini Fragment Plating System MLP**  
**2.4mm LCP Condylar Plate**  
Matching Screw: 2.4mm Locking Screw



Head thickness    Thickness    Head width    Width  
1.3                    1.8                    12                    6.5

Hole	P.N	Length	Material
3	121224003	30.0mm	Titanium
4	121224004	37.5mm	Titanium
5	121224005	44.5mm	Titanium
6	121224006	51.7mm	Titanium
7	121224007	59.0mm	Titanium

**Mini Fragment Plating System MLP**  
**2.0mm LCP Y-Plate**  
Matching Screw: 2.0mm Locking Screw



Head thickness    Thickness    Head width    Width  
1.3                    1.8                    17.5                    5

Hole	P.N	Length	Material
4	121233104	38.2mm	Titanium
5	121233105	45.5mm	Titanium
6	121233106	52.7mm	Titanium
7	121233107	60.0mm	Titanium

**Mini Locking Fragment Plating System MLP**  
**2.0mm LCP T-Plate**  
Matching Screw: 2.0mm Locking Screw



Head thickness    Thickness    Head width    Width  
1.3                    1.8                    18                    5

Hole	P.N	Length	Material
4	121234104	35.2mm	Titanium
5	121234105	42.5mm	Titanium
6	121234106	49.7mm	Titanium
7	121234107	57.0mm	Titanium

**Mini Fragment Plating System MLP**  
**2.0mm LCP Condylar Plate**  
Matching Screw: 2.0mm Locking Screw



Head thickness    Thickness    Head width    Width  
1.3                    1.8                    10                    5

Hole	P.N	Length	Material
3	121224103	30.0mm	Titanium
4	121224104	37.5mm	Titanium
5	121224105	44.5mm	Titanium
6	121224106	51.7mm	Titanium
7	121224107	59.0mm	Titanium

**Mini Plates**

**Mini Fragment Plating System MLP  
Locking Plate**

Matching Screw: 2.4mm Locking Screw



Head thickness    Thickness    Head width    Width  
1.6                    1.6                    6.5                    6.5

Hole	P.N	Length	Material
4	121222004	36mm	Titanium
5	121222005	44mm	Titanium
6	121222006	52mm	Titanium
7	121222007	60mm	Titanium
8	121222008	68mm	Titanium
10	121222010	84mm	Titanium

**Mini Fragment Plating System MLP  
LCP Locking Plate**

Matching Screw: 2.0mm Locking Screw



Head thickness    Thickness    Head width    Width  
1.3                    1.3                    5.5                    5.5

Hole	P.N	Length	Material
4	121222104	36mm	Titanium
5	121222105	36mm	Titanium
6	121222106	44mm	Titanium
7	121222107	52mm	Titanium
8	121222108	60mm	Titanium
10	121222110	68mm	Titanium

**Mini Locking Fragment Plating System MLP  
LCP Adaption Locking Plate**

Matching Screw: 2.4mm Locking Screw



Head thickness    Thickness    Head width    Width  
1.8                    1.8                    6.5                    6.5

Hole	P.N	Length	Material
12	121223012	88mm	Titanium

**Mini Locking Fragment Plating System MLP  
LCP Adaption Locking Plate**

Matching Screw: 2.0mm Locking Screw



Head thickness    Thickness    Head width    Width  
1.3                    1.3                    5                    5

Hole	P.N	Length	Material
12	121223112	88mm	Titanium

Mini Plates

Mini Fragment Plating System MLP  
1.5mm Locking T-Plate

Matching Screw: 1.5mm locking Screw, 1.5mm Cortical Screw



Hole	P.N	Length	Material
4	121131004	26mm	Titanium
5	121131005	31mm	Titanium
6	121131006	36mm	Titanium
7	121131007	41mm	Titanium
8	121131008	46mm	Titanium

Mini Fragment Plating System MLP  
1.5mm Locking Y-Plate

Matching Screw: 1.5mm locking Screw, 1.5mm Cortical Screw



Hole	P.N	Length	Material
4	121140004	27.4mm	Titanium
5	121140005	32.4mm	Titanium
6	121140006	37.4mm	Titanium
7	121140007	42.4mm	Titanium
8	121140008	47.4mm	Titanium

Mini Fragment Plating System MLP  
1.5mm Locking Condylar Plate

Matching Screw 1.5mm locking Screw, 1.5mm Cortical Screw



Hole	P.N	Length	Material
4	121141004	27.4mm	Titanium
5	121141005	32.4mm	Titanium
6	121141006	37.4mm	Titanium
7	121141007	42.4mm	Titanium

Mini Fragment Plating System MLP  
1.5mm Locking Support Plate

Matching Screw 1.5mm locking Screw, 1.5mm Cortical Screw



Hole	Direction	P.N	Length	Material
8	Left	121239108	23mm	Titanium
8	Right	121239208	23mm	Titanium

Mini plates

Mini Fragment Plating System MLP  
1.5mm Phalangeal Metacarpal Plate

Matching Screw: 1.5mm locking Screw, 1.5mm Cortical Screw



Hole	P.N	Length	Material
6	121221006	30.5mm	Titanium
12	121221012	60.5mm	Titanium

Mini Fragment Plating System MLP  
1.5mm LCP Locking Plate

Matching Screw: 1.5mm locking Screw, 1.5mm Cortical Screw



Hole	P.N	Length	Material
4	121222204	25mm	Titanium
6	121222206	38mm	Titanium
8	121222208	51mm	Titanium

**Screws**

**Small Fragment Plating System SFP  
Cortex Screw 3.5mm**



Thread diameter	Depth	Spacing	Shank diameter
Φ3.5	0.55	1.25	Φ2.4
Head diameter	Head height	Head specifications(Unit:mm)	
Φ6	3.2	2.5	

Specification	P.N	Material
Φ3.5X12	132111012	Titanium
Φ3.5X14	132111014	Titanium
Φ3.5X16	132111016	Titanium
Φ3.5X18	132111018	Titanium
Φ3.5X20	132111020	Titanium
Φ3.5X22	132111022	Titanium
Φ3.5X24	132111024	Titanium
Φ3.5X26	132111026	Titanium
Φ3.5X28	132111028	Titanium
Φ3.5X30	132111030	Titanium
Φ3.5X32	132111032	Titanium
Φ3.5X34	132111034	Titanium
Φ3.5X36	132111036	Titanium
Φ3.5X38	132111038	Titanium
Φ3.5X40	132111040	Titanium
Φ3.5X42	132111042	Titanium
Φ3.5X44	132111044	Titanium
Φ3.5X46	132111046	Titanium
Φ3.5X48	132111048	Titanium
Φ3.5X50	132111050	Titanium
Φ3.5×55	132111055	Titanium
Φ3.5×60	132111060	Titanium
Φ3.5×65	132111065	Titanium
Φ3.5×70	132111070	Titanium
Φ3.5×75	132111075	Titanium
Φ3.5×80	132111080	Titanium
Φ3.5×85	132111085	Titanium
Φ3.5×90	132111090	Titanium

**Small Fragment Plating System SFP  
Cortex Screw, Self-tapping Φ3.5mm**



Thread diameter	Depth	Spacing	Shank diameter
Φ3.5	0.55	1.25	Φ2.4
Head diameter	Head height		
Φ6.0	2.7		

Specification	P.N	Material
Φ3.5×12	132112012	Titanium
Φ3.5×14	132112014	Titanium
Φ3.5×16	132112016	Titanium
Φ3.5×18	132112018	Titanium
Φ3.5×20	132112020	Titanium
Φ3.5×22	132112022	Titanium
Φ3.5×24	132112024	Titanium
Φ3.5×26	132112026	Titanium
Φ3.5×28	132112028	Titanium
Φ3.5×30	132112030	Titanium
Φ3.5×32	132112032	Titanium
Φ3.5×34	132112034	Titanium
Φ3.5×36	132112036	Titanium
Φ3.5×38	132112038	Titanium
Φ3.5×40	132112040	Titanium
Φ3.5×42	132112042	Titanium
Φ3.5×44	132112044	Titanium
Φ3.5×46	132112046	Titanium
Φ3.5×48	132112048	Titanium
Φ3.5×50	132112050	Titanium

**Screws**

**Small Fragment Plating System SFP**  
Cancellous Bone Screw, fully threaded  $\Phi 4.0\text{mm}$



Thread diameter	Depth	Spacing	Shank diameter	Head diameter
$\Phi 4$	1.05	1.75	$\Phi 1.9$	$\Phi 6$

Head height	Head specifications(Unit:mm)
3.2	2.5

Specification	P.N	Material
$\Phi 4.0 \times 12$	132117212	Titanium
$\Phi 4.0 \times 14$	132117214	Titanium
$\Phi 4.0 \times 16$	132117216	Titanium
$\Phi 4.0 \times 18$	132117218	Titanium
$\Phi 4.0 \times 20$	132117220	Titanium
$\Phi 4.0 \times 22$	132117222	Titanium
$\Phi 4.0 \times 24$	132117224	Titanium
$\Phi 4.0 \times 26$	132117226	Titanium
$\Phi 4.0 \times 28$	132117228	Titanium
$\Phi 4.0 \times 30$	132117230	Titanium
$\Phi 4.0 \times 32$	132117232	Titanium
$\Phi 4.0 \times 34$	132117234	Titanium
$\Phi 4.0 \times 36$	132117236	Titanium
$\Phi 4.0 \times 38$	132117238	Titanium
$\Phi 4.0 \times 40$	132117240	Titanium
$\Phi 4.0 \times 42$	132117242	Titanium
$\Phi 4.0 \times 44$	132117244	Titanium
$\Phi 4.0 \times 46$	132117246	Titanium
$\Phi 4.0 \times 48$	132117248	Titanium
$\Phi 4.0 \times 50$	132117250	Titanium
$\Phi 4.0 \times 52$	132117252	Titanium

**Small Fragment Plating System SFP**  
Cancellous Bone Screw, partially threaded  $\Phi 4.0\text{mm}$



Thread diameter	Depth	Spacing	Shank diameter	Head diameter
$\Phi 4$	1.05	1.75	$\Phi 1.9$	$\Phi 6$

Head height	Head specifications(Unit:mm)
3.2	2.5

Specification	P.N	Material
$\Phi 4.0 \times 20$	132115020	Titanium
$\Phi 4.0 \times 22$	132115022	Titanium
$\Phi 4.0 \times 24$	132115024	Titanium
$\Phi 4.0 \times 26$	132115026	Titanium
$\Phi 4.0 \times 28$	132115028	Titanium
$\Phi 4.0 \times 30$	132115030	Titanium
$\Phi 4.0 \times 32$	132115032	Titanium
$\Phi 4.0 \times 34$	132115034	Titanium
$\Phi 4.0 \times 36$	132115036	Titanium
$\Phi 4.0 \times 38$	132115038	Titanium
$\Phi 4.0 \times 40$	132115040	Titanium
$\Phi 4.0 \times 42$	132115042	Titanium
$\Phi 4.0 \times 44$	132115044	Titanium
$\Phi 4.0 \times 46$	132115046	Titanium
$\Phi 4.0 \times 48$	132115048	Titanium
$\Phi 4.0 \times 50$	132115050	Titanium
$\Phi 4.0 \times 52$	132115052	Titanium
$\Phi 4.0 \times 54$	132115054	Titanium
$\Phi 4.0 \times 56$	132115056	Titanium
$\Phi 4.0 \times 58$	132115058	Titanium
$\Phi 4.0 \times 60$	132115060	Titanium

**Screws**

**Large Fragment Plating System LFP  
Cortex Screw  $\Phi$ 4.5mm**



Thread diameter	Depth	Spacing	Shank diameter	Head diameter
$\Phi$ 4.5	0.75	1.75	$\Phi$ 3	$\Phi$ 8

Head height	Head specifications(Unit:mm)
4.5	3.5

Specification	P.N	Material
$\Phi$ 4.5X16	133111016	Titanium
$\Phi$ 4.5X18	133111018	Titanium
$\Phi$ 4.5X20	133111020	Titanium
$\Phi$ 4.5X22	133111022	Titanium
$\Phi$ 4.5X24	133111024	Titanium
$\Phi$ 4.5X26	133111026	Titanium
$\Phi$ 4.5X28	133111028	Titanium
$\Phi$ 4.5X30	133111030	Titanium
$\Phi$ 4.5X32	133111032	Titanium
$\Phi$ 4.5X34	133111034	Titanium
$\Phi$ 4.5X36	133111036	Titanium
$\Phi$ 4.5X38	133111038	Titanium
$\Phi$ 4.5X40	133111040	Titanium
$\Phi$ 4.5X42	133111042	Titanium
$\Phi$ 4.5X44	133111044	Titanium
$\Phi$ 4.5X46	133111046	Titanium
$\Phi$ 4.5X48	133111048	Titanium
$\Phi$ 4.5X50	133111050	Titanium
$\Phi$ 4.5X52	133111052	Titanium
$\Phi$ 4.5X54	133111054	Titanium
$\Phi$ 4.5X56	133111056	Titanium
$\Phi$ 4.5X58	133111058	Titanium
$\Phi$ 4.5X60	133111060	Titanium
$\Phi$ 4.5 $\times$ 65	133111065	Titanium
$\Phi$ 4.5 $\times$ 70	133111070	Titanium
$\Phi$ 4.5 $\times$ 75	133111075	Titanium
$\Phi$ 4.5 $\times$ 80	133111080	Titanium
$\Phi$ 4.5 $\times$ 85	133111085	Titanium
$\Phi$ 4.5 $\times$ 90	133111090	Titanium

**Large Fragment Plating System LFP  
Cancellous Bone Screw  $\Phi$ 6.5mm, fully threaded**



Thread diameter	Depth	Spacing	Shank diameter	Head diameter
$\Phi$ 6.5	1.75	2.75	$\Phi$ 3	$\Phi$ 8

Head height	Head specifications(Unit:mm)
4.8	3.5

Specification	P.N	Material
$\Phi$ 6.5X20	133117020	Titanium
$\Phi$ 6.5X25	133117025	Titanium
$\Phi$ 6.5X30	133117030	Titanium
$\Phi$ 6.5X35	133117035	Titanium
$\Phi$ 6.5X40	133117040	Titanium
$\Phi$ 6.5X45	133117045	Titanium
$\Phi$ 6.5X50	133117050	Titanium
$\Phi$ 6.5X55	133117055	Titanium
$\Phi$ 6.5X60	133117060	Titanium
$\Phi$ 6.5X65	133117065	Titanium
$\Phi$ 6.5X70	133117070	Titanium
$\Phi$ 6.5X75	133117075	Titanium
$\Phi$ 6.5X80	133117080	Titanium
$\Phi$ 6.5X85	133117085	Titanium
$\Phi$ 6.5X90	133117090	Titanium
$\Phi$ 6.5X95	133117095	Titanium
$\Phi$ 6.5X100	133117100	Titanium
$\Phi$ 6.5X105	133117105	Titanium
$\Phi$ 6.5X110	133117110	Titanium
$\Phi$ 6.5X115	133117115	Titanium
$\Phi$ 6.5X120	133117120	Titanium



**Screws**

Large Fragment Plating System LFP  
Cancellous Bone Screw  $\Phi 6.5\text{mm}$ , partially threaded



Specification	P.N	Material
$\Phi 6.5 \times 50$	133115050	Titanium
$\Phi 6.5 \times 55$	133115055	Titanium
$\Phi 6.5 \times 60$	133115060	Titanium
$\Phi 6.5 \times 65$	133115065	Titanium
$\Phi 6.5 \times 70$	133115070	Titanium
$\Phi 6.5 \times 75$	133115075	Titanium
$\Phi 6.5 \times 80$	133115080	Titanium
$\Phi 6.5 \times 85$	133115085	Titanium
$\Phi 6.5 \times 90$	133115090	Titanium
$\Phi 6.5 \times 95$	133115095	Titanium
$\Phi 6.5 \times 100$	133115100	Titanium
$\Phi 6.5 \times 105$	133115105	Titanium
$\Phi 6.5 \times 110$	133115110	Titanium
$\Phi 6.5 \times 115$	133115115	Titanium
$\Phi 6.5 \times 120$	133115120	Titanium

Mini Fragment Plating System MFP  
Cortex Screw  $\Phi 2.0\text{mm}$



Specification	P.N	Material
$\Phi 2.0 \times 7$	131114007	Titanium
$\Phi 2.0 \times 8$	131114008	Titanium
$\Phi 2.0 \times 9$	131114009	Titanium
$\Phi 2.0 \times 10$	131114010	Titanium
$\Phi 2.0 \times 11$	131114011	Titanium
$\Phi 2.0 \times 12$	131114012	Titanium
$\Phi 2.0 \times 13$	131114013	Titanium
$\Phi 2.0 \times 14$	131114014	Titanium
$\Phi 2.0 \times 16$	131114016	Titanium
$\Phi 2.0 \times 18$	131114018	Titanium
$\Phi 2.0 \times 20$	131114020	Titanium
$\Phi 2.0 \times 22$	131114022	Titanium
$\Phi 2.0 \times 24$	131114024	Titanium
$\Phi 2.0 \times 26$	131114026	Titanium
$\Phi 2.0 \times 28$	131114028	Titanium
$\Phi 2.0 \times 30$	131114030	Titanium
$\Phi 2.0 \times 32$	131114032	Titanium
$\Phi 2.0 \times 34$	131114034	Titanium
$\Phi 2.0 \times 36$	131114036	Titanium
$\Phi 2.0 \times 38$	131114038	Titanium

Thread diameter    Depth    Spacing    Shank diameter  
 $\Phi 2.0$             0.3            0.6             $\Phi 1.4$

Head diameter    Head height  
 $\Phi 3.2$             1

Mini Fragment Plating System MFP  
Cortex Screw  $\Phi 2.4\text{mm}$



Specification	P.N	Material
$\Phi 2.4 \times 8$	132103008	Titanium
$\Phi 2.4 \times 10$	132103010	Titanium
$\Phi 2.4 \times 11$	132103011	Titanium
$\Phi 2.4 \times 12$	132103012	Titanium
$\Phi 2.4 \times 13$	132103013	Titanium
$\Phi 2.4 \times 14$	132103014	Titanium
$\Phi 2.4 \times 16$	132103016	Titanium
$\Phi 2.4 \times 18$	132103018	Titanium
$\Phi 2.4 \times 20$	132103020	Titanium
$\Phi 2.4 \times 22$	132103022	Titanium
$\Phi 2.4 \times 24$	132103024	Titanium
$\Phi 2.4 \times 26$	132103026	Titanium
$\Phi 2.4 \times 28$	132103028	Titanium
$\Phi 2.4 \times 30$	132103030	Titanium
$\Phi 2.4 \times 32$	132103032	Titanium
$\Phi 2.4 \times 34$	132103034	Titanium
$\Phi 2.4 \times 36$	132103036	Titanium
$\Phi 2.4 \times 38$	132103038	Titanium
$\Phi 2.4 \times 40$	132103040	Titanium

Thread diameter    Depth    Spacing    Shank diameter  
 $\Phi 2.4$             0.32            1             $\Phi 1.7$

Head diameter    Head height  
 $\Phi 3.6$             1.2

**Screws**

Mini Fragment Plating System MFP  
Cortex Screw  $\Phi 1.5\text{mm}$



Specification	P.N	Material
$\Phi 1.5 \times 6$	131116006	Titanium
$\Phi 1.5 \times 7$	131116007	Titanium
$\Phi 1.5 \times 8$	131116008	Titanium
$\Phi 1.5 \times 9$	131116009	Titanium
$\Phi 1.5 \times 10$	131116010	Titanium
$\Phi 1.5 \times 11$	131116011	Titanium
$\Phi 1.5 \times 12$	131116012	Titanium
$\Phi 1.5 \times 13$	131116013	Titanium
$\Phi 1.5 \times 14$	131116014	Titanium
$\Phi 1.5 \times 16$	131116016	Titanium
$\Phi 1.5 \times 18$	131116018	Titanium
$\Phi 1.5 \times 20$	131116020	Titanium

Mini Fragment Plating System MFP  
Cortex Screw  $\Phi 2.0\text{mm}$



Thread diameter	Depth	Spacing	Shank diameter
$\Phi 2.0$	0.3	0.6	$\Phi 1.4$
Head diameter	Head height		
$\Phi 3.2$	0.92		

Specification	P.N	Material
$\Phi 2.0 \times 6$	131115006	Titanium
$\Phi 2.0 \times 7$	131115007	Titanium
$\Phi 2.0 \times 8$	131115008	Titanium
$\Phi 2.0 \times 9$	131115009	Titanium
$\Phi 2.0 \times 10$	131115010	Titanium
$\Phi 2.0 \times 11$	131115011	Titanium
$\Phi 2.0 \times 12$	131115012	Titanium
$\Phi 2.0 \times 13$	131115013	Titanium
$\Phi 2.0 \times 14$	131115014	Titanium
$\Phi 2.0 \times 16$	131115016	Titanium
$\Phi 2.0 \times 18$	131115018	Titanium
$\Phi 2.0 \times 20$	131115020	Titanium
$\Phi 2.0 \times 22$	131115022	Titanium
$\Phi 2.0 \times 24$	131115024	Titanium
$\Phi 2.0 \times 26$	131115026	Titanium
$\Phi 2.0 \times 28$	131115028	Titanium
$\Phi 2.0 \times 30$	131115030	Titanium
$\Phi 2.0 \times 32$	131115032	Titanium
$\Phi 2.0 \times 34$	131115034	Titanium
$\Phi 2.0 \times 36$	131115036	Titanium
$\Phi 2.0 \times 38$	131115038	Titanium

Large Fragment Plating System MFP  
Cortex Screw  $\Phi 2.4\text{mm}$



Thread diameter	Depth	Spacing	Shank diameter
$\Phi 2.4$	0.32	1	$\Phi 1.7$
Head diameter	Head height		
$\Phi 4.0$	1.8		

Specification	P.N	Material
$\Phi 2.4 \times 8$	132105008	Titanium
$\Phi 2.4 \times 10$	132105010	Titanium
$\Phi 2.4 \times 11$	132105011	Titanium
$\Phi 2.4 \times 12$	132105012	Titanium
$\Phi 2.4 \times 13$	132105013	Titanium
$\Phi 2.4 \times 14$	132105014	Titanium
$\Phi 2.4 \times 16$	132105016	Titanium
$\Phi 2.4 \times 18$	132105018	Titanium
$\Phi 2.4 \times 20$	132105020	Titanium
$\Phi 2.4 \times 22$	132105022	Titanium
$\Phi 2.4 \times 24$	132105024	Titanium
$\Phi 2.4 \times 26$	132105026	Titanium
$\Phi 2.4 \times 28$	132105028	Titanium
$\Phi 2.4 \times 30$	132105030	Titanium
$\Phi 2.4 \times 32$	132105032	Titanium
$\Phi 2.4 \times 34$	132105034	Titanium
$\Phi 2.4 \times 36$	132105036	Titanium
$\Phi 2.4 \times 38$	132105038	Titanium
$\Phi 2.4 \times 40$	132105040	Titanium
$\Phi 2.4 \times 60$	132105060	Titanium

**Screws**

**Small Locking Fragment Plating System SLP  
Locking Screw, self-tapping  $\Phi$ 2.4mm**



Thread diameter	Depth	Spacing	Shank diameter	Head diameter
$\Phi$ 2.4	0.25	0.6	$\Phi$ 1.9	$\Phi$ 3.5
Head height	Head specifications(Unit:mm)			
2.3	/			

Specification	P.N	Material
$\Phi$ 2.4X8	132201008	Titanium
$\Phi$ 2.4X10	132201010	Titanium
$\Phi$ 2.4X11	132201011	Titanium
$\Phi$ 2.4X12	132201012	Titanium
$\Phi$ 2.4X13	132201013	Titanium
$\Phi$ 2.4X14	132201014	Titanium
$\Phi$ 2.4X16	132201016	Titanium
$\Phi$ 2.4X18	132201018	Titanium
$\Phi$ 2.4X20	132201020	Titanium
$\Phi$ 2.4X22	132201022	Titanium
$\Phi$ 2.4X24	132201024	Titanium
$\Phi$ 2.4X26	132201026	Titanium
$\Phi$ 2.4X28	132201028	Titanium
$\Phi$ 2.4X30	132201030	Titanium

**Small Locking Fragment Plating System SLP  
Locking Screw, self-tapping  $\Phi$ 2.7mm**



Thread diameter	Depth	Spacing	Shank diameter	Head diameter
$\Phi$ 2.7	0.3	0.6	$\Phi$ 2.1	$\Phi$ 3.5
Head height	Head specifications(Unit:mm)			
2.1	/			

Specification	P.N	Material
$\Phi$ 2.7X8	132202008	Titanium
$\Phi$ 2.7X10	132202010	Titanium
$\Phi$ 2.7X12	132202012	Titanium
$\Phi$ 2.7X14	132202014	Titanium
$\Phi$ 2.7X16	132202016	Titanium
$\Phi$ 2.7X18	132202018	Titanium
$\Phi$ 2.7X20	132202020	Titanium
$\Phi$ 2.7X22	132202022	Titanium
$\Phi$ 2.7X24	132202024	Titanium
$\Phi$ 2.7X26	132202026	Titanium
$\Phi$ 2.7X28	132202028	Titanium
$\Phi$ 2.7X30	132202030	Titanium
$\Phi$ 2.7X35	132202035	Titanium
$\Phi$ 2.7X40	132202040	Titanium
$\Phi$ 2.7X45	132202045	Titanium
$\Phi$ 2.7X50	132202050	Titanium
$\Phi$ 2.7X55	132202055	Titanium
$\Phi$ 2.7X60	132202060	Titanium

**Screws**

Small Locking Fragment Plating System SLP  
VA Locking Screw  $\Phi$ 2.4mm



Specification	P.N	Material
$\Phi$ 2.4X8	132311008	Titanium
$\Phi$ 2.4X10	132311010	Titanium
$\Phi$ 2.4X12	132311012	Titanium
$\Phi$ 2.4X14	132311014	Titanium
$\Phi$ 2.4X16	132311016	Titanium
$\Phi$ 2.4X18	132311018	Titanium
$\Phi$ 2.4X20	132311020	Titanium
$\Phi$ 2.4X22	132311022	Titanium
$\Phi$ 2.4X24	132311024	Titanium
$\Phi$ 2.4X26	132311026	Titanium
$\Phi$ 2.4X28	132311028	Titanium
$\Phi$ 2.4X30	132311030	Titanium

Small Locking Fragment Plating System SLP  
Locking Screw, self-tapping  $\Phi$ 3.5mm



Specification	P.N	Material
$\Phi$ 3.5X10	132214010	Titanium
$\Phi$ 3.5X12	132214012	Titanium
$\Phi$ 3.5X14	132214014	Titanium
$\Phi$ 3.5X16	132214016	Titanium
$\Phi$ 3.5X18	132214018	Titanium
$\Phi$ 3.5X20	132214020	Titanium
$\Phi$ 3.5X22	132214022	Titanium
$\Phi$ 3.5X24	132214024	Titanium
$\Phi$ 3.5X26	132214026	Titanium
$\Phi$ 3.5X28	132214028	Titanium
$\Phi$ 3.5X30	132214030	Titanium
$\Phi$ 3.5X32	132214032	Titanium
$\Phi$ 3.5X34	132214034	Titanium
$\Phi$ 3.5X35	132214035	Titanium
$\Phi$ 3.5X36	132214036	Titanium
$\Phi$ 3.5X38	132214038	Titanium
$\Phi$ 3.5X40	132214040	Titanium
$\Phi$ 3.5X42	132214042	Titanium
$\Phi$ 3.5X44	132214044	Titanium
$\Phi$ 3.5X45	132214045	Titanium
$\Phi$ 3.5X46	132214046	Titanium
$\Phi$ 3.5X48	132214048	Titanium
$\Phi$ 3.5X50	132214050	Titanium
$\Phi$ 3.5X55	132214055	Titanium
$\Phi$ 3.5X60	132214060	Titanium
$\Phi$ 3.5X65	132214065	Titanium
$\Phi$ 3.5X70	132214070	Titanium
$\Phi$ 3.5X75	132214075	Titanium
$\Phi$ 3.5X80	132214080	Titanium
$\Phi$ 3.5X85	132214085	Titanium
$\Phi$ 3.5X90	132214090	Titanium

Thread diameter	Depth	Spacing	Shank diameter	Head diameter
$\Phi$ 3.5	/	/	$\Phi$ 2.9	$\Phi$ 4.9
Head height	Head specifications(Unit:mm)			
2.6	T2.5			

Small Locking Fragment Plating System SLP  
Locking Spacer



Specification	P.N	Material
$\Phi$ 3.5	132211002	Titanium

**Screws**

Large Locking Fragment Plating System LLP  
Locking Screw, self-tapping  $\Phi 5.0\text{mm}$



Thread diameter	Depth	Spacing	Shank diameter	Head diameter
$\Phi 5$	/	/	$\Phi 4.4$	$\Phi 6.6$

Head height	Head specifications(Unit:mm)
4	T25

Specification	P.N	Material
$\Phi 5.0 \times 14$	133202014	Titanium
$\Phi 5.0 \times 16$	133202016	Titanium
$\Phi 5.0 \times 18$	133202018	Titanium
$\Phi 5.0 \times 20$	133202020	Titanium
$\Phi 5.0 \times 22$	133202022	Titanium
$\Phi 5.0 \times 24$	133202024	Titanium
$\Phi 5.0 \times 26$	133202026	Titanium
$\Phi 5.0 \times 28$	133202028	Titanium
$\Phi 5.0 \times 30$	133202030	Titanium
$\Phi 5.0 \times 32$	133202032	Titanium
$\Phi 5.0 \times 34$	133202034	Titanium
$\Phi 5.0 \times 36$	133202036	Titanium
$\Phi 5.0 \times 38$	133202038	Titanium
$\Phi 5.0 \times 40$	133202040	Titanium
$\Phi 5.0 \times 42$	133202042	Titanium
$\Phi 5.0 \times 44$	133202044	Titanium
$\Phi 5.0 \times 45$	133202045	Titanium
$\Phi 5.0 \times 46$	133202046	Titanium
$\Phi 5.0 \times 48$	133202048	Titanium
$\Phi 5.0 \times 50$	133202050	Titanium
$\Phi 5.0 \times 55$	133202055	Titanium
$\Phi 5.0 \times 60$	133202060	Titanium
$\Phi 5.0 \times 65$	133202065	Titanium
$\Phi 5.0 \times 70$	133202070	Titanium
$\Phi 5.0 \times 75$	133202075	Titanium
$\Phi 5.0 \times 80$	133202080	Titanium
$\Phi 5.0 \times 85$	133202085	Titanium
$\Phi 5.0 \times 90$	133202090	Titanium
$\Phi 5.0 \times 95$	133202095	Titanium
$\Phi 5.0 \times 100$	133202100	Titanium

Large Locking Fragment Plating System LLP  
Spacer



Specification	P.N	Material
$\Phi 5.0$	133219002	Titanium

Large Locking Fragment Plating System LLP  
Periporsthetic Screw  $\Phi 5.0\text{mm}$



Thread diameter	Depth	Spacing	Shank diameter
$\Phi 5.0$	0.3	1	$\Phi 4.4$

Head diameter	Head height	Head specifications(Unit:mm)
$\Phi 6.6$	3.5	T25

Specification	P.N	Material
$\Phi 5.0 \times 14$	133203214	Titanium
$\Phi 5.0 \times 18$	133203218	Titanium

**Screws**

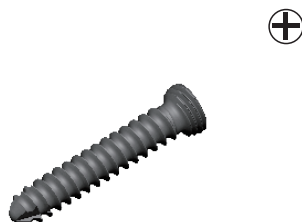
Large Locking Fragment Plating System LLP  
Locking Screw , self-drilling  $\Phi 5.0$ mm



Thread diameter	Depth	Spacing	Shank diameter	Head diameter
$\Phi 5.0$	0.3	1	$\Phi 4.4$	$\Phi 6.6$
Head height	Head specifications(Unit:mm)			
3.5	T25			

Specification	P.N	Material
$\Phi 5.0 \times 18$	133203018	Titanium
$\Phi 5.0 \times 20$	133203020	Titanium
$\Phi 5.0 \times 22$	133203022	Titanium
$\Phi 5.0 \times 24$	133203024	Titanium
$\Phi 5.0 \times 26$	133203026	Titanium
$\Phi 5.0 \times 28$	133203028	Titanium
$\Phi 5.0 \times 30$	133203030	Titanium
$\Phi 5.0 \times 32$	133203032	Titanium
$\Phi 5.0 \times 34$	133203034	Titanium
$\Phi 5.0 \times 36$	133203036	Titanium
$\Phi 5.0 \times 38$	133203038	Titanium
$\Phi 5.0 \times 40$	133203040	Titanium
$\Phi 5.0 \times 42$	133203042	Titanium
$\Phi 5.0 \times 44$	133203044	Titanium
$\Phi 5.0 \times 45$	133203045	Titanium
$\Phi 5.0 \times 46$	133203046	Titanium
$\Phi 5.0 \times 48$	133203048	Titanium
$\Phi 5.0 \times 50$	133203050	Titanium
$\Phi 5.0 \times 55$	133203055	Titanium
$\Phi 5.0 \times 60$	133203060	Titanium
$\Phi 5.0 \times 65$	133203065	Titanium
$\Phi 5.0 \times 70$	133203070	Titanium
$\Phi 5.0 \times 75$	133203075	Titanium
$\Phi 5.0 \times 80$	133203080	Titanium
$\Phi 5.0 \times 85$	133203085	Titanium
$\Phi 5.0 \times 90$	133203090	Titanium
$\Phi 5.0 \times 95$	133203095	Titanium
$\Phi 5.0 \times 100$	133203100	Titanium

Mini Fragment Plating System MLP  
Locking Screw  $\Phi 1.5$ mm



Specification	P.N	Material
$\Phi 1.5 \times 6$	131216006	Titanium
$\Phi 1.5 \times 7$	131216007	Titanium
$\Phi 1.5 \times 8$	131216008	Titanium
$\Phi 1.5 \times 9$	131216009	Titanium
$\Phi 1.5 \times 10$	131216010	Titanium
$\Phi 1.5 \times 11$	131216011	Titanium
$\Phi 1.5 \times 12$	131216012	Titanium
$\Phi 1.5 \times 13$	131216013	Titanium
$\Phi 1.5 \times 14$	131216014	Titanium
$\Phi 1.5 \times 16$	131216016	Titanium
$\Phi 1.5 \times 18$	131216018	Titanium
$\Phi 1.5 \times 20$	131216020	Titanium

Mini Locking Fragment Plating System MLP  
Locking screw, self-tapping  $\Phi 2.0$ mm



Thread diameter	Depth	Spacing	Shank diameter	Head diameter
$\Phi 2$	0.3	0.6	$\Phi 1.4$	$\Phi 2.8$
Head height	Head specifications(Unit:mm)			
1.8	/			

Specification	P.N	Material
$\Phi 2.0 \times 6$	131212006	Titanium
$\Phi 2.0 \times 7$	131212007	Titanium
$\Phi 2.0 \times 8$	131212008	Titanium
$\Phi 2.0 \times 9$	131212009	Titanium
$\Phi 2.0 \times 10$	131212010	Titanium
$\Phi 2.0 \times 11$	131212011	Titanium
$\Phi 2.0 \times 12$	131212012	Titanium
$\Phi 2.0 \times 13$	131212013	Titanium
$\Phi 2.0 \times 14$	131212014	Titanium
$\Phi 2.0 \times 16$	131212016	Titanium
$\Phi 2.0 \times 18$	131212018	Titanium
$\Phi 2.0 \times 20$	131212020	Titanium
$\Phi 2.0 \times 22$	131212022	Titanium
$\Phi 2.0 \times 24$	131212024	Titanium
$\Phi 2.0 \times 26$	131212026	Titanium
$\Phi 2.0 \times 28$	131212028	Titanium
$\Phi 2.0 \times 30$	131212030	Titanium

Cannulated Screw

Cannulated Screw System NUS  
Cannulated Screw  $\Phi$ 3.0mm



Thread diameter    Shank diameter    Head diameter  
 $\Phi$  3.0                     $\Phi$  2.0                     $\Phi$  4

Specification	P.N	Material
$\Phi$ 3.0 $\times$ 10	134631010	Titanium
$\Phi$ 3.0 $\times$ 11	134631011	Titanium
$\Phi$ 3.0 $\times$ 12	134631012	Titanium
$\Phi$ 3.0 $\times$ 13	134631013	Titanium
$\Phi$ 3.0 $\times$ 14	134631014	Titanium
$\Phi$ 3.0 $\times$ 15	134631015	Titanium
$\Phi$ 3.0 $\times$ 16	134631016	Titanium
$\Phi$ 3.0 $\times$ 17	134631017	Titanium
$\Phi$ 3.0 $\times$ 18	134631018	Titanium
$\Phi$ 3.0 $\times$ 19	134631019	Titanium
$\Phi$ 3.0 $\times$ 20	134631020	Titanium
$\Phi$ 3.0 $\times$ 21	134631021	Titanium
$\Phi$ 3.0 $\times$ 22	134631022	Titanium
$\Phi$ 3.0 $\times$ 23	134631023	Titanium
$\Phi$ 3.0 $\times$ 24	134631024	Titanium
$\Phi$ 3.0 $\times$ 25	134631025	Titanium
$\Phi$ 3.0 $\times$ 26	134631026	Titanium
$\Phi$ 3.0 $\times$ 27	134631027	Titanium
$\Phi$ 3.0 $\times$ 28	134631028	Titanium
$\Phi$ 3.0 $\times$ 29	134631029	Titanium
$\Phi$ 3.0 $\times$ 30	134631030	Titanium
$\Phi$ 3.0 $\times$ 32	134631032	Titanium
$\Phi$ 3.0 $\times$ 34	134631034	Titanium
$\Phi$ 3.0 $\times$ 36	134631036	Titanium
$\Phi$ 3.0 $\times$ 38	134631038	Titanium
$\Phi$ 3.0 $\times$ 40	134631040	Titanium

Cannulated Screw System NUS  
Cannulated Screw  $\Phi$  4.5mm,self-drilling



Thread diameter    Shank diameter    Head diameter  
 $\Phi$  4.5                     $\Phi$  2.7                     $\Phi$  6.5

Specification	P.N	Length(mm)	Material
$\Phi$ 4.5X20	134211020	7	Titanium
$\Phi$ 4.5X22	134211022	7	Titanium
$\Phi$ 4.5X24	134211024	8	Titanium
$\Phi$ 4.5X26	134211026	9	Titanium
$\Phi$ 4.5X28	134211028	9	Titanium
$\Phi$ 4.5X30	134211030	10	Titanium
$\Phi$ 4.5X32	134211032	11	Titanium
$\Phi$ 4.5X34	134211034	11	Titanium
$\Phi$ 4.5X36	134211036	12	Titanium
$\Phi$ 4.5X38	134211038	13	Titanium
$\Phi$ 4.5X40	134211040	13	Titanium
$\Phi$ 4.5X42	134211042	14	Titanium
$\Phi$ 4.5X44	134211044	15	Titanium
$\Phi$ 4.5X46	134211046	15	Titanium
$\Phi$ 4.5X48	134211048	16	Titanium
$\Phi$ 4.5X50	134211050	17	Titanium
$\Phi$ 4.5X52	134211052	17	Titanium
$\Phi$ 4.5X54	134211054	18	Titanium
$\Phi$ 4.5X56	134211056	19	Titanium
$\Phi$ 4.5X60	134211060	20	Titanium
$\Phi$ 4.5X64	134211064	21	Titanium
$\Phi$ 4.5X68	134211068	23	Titanium
$\Phi$ 4.5X72	134211072	24	Titanium

Cannulated Screw

Cannulated Screw System NUS  
Cannulated Screw  $\Phi$ 6.5mm, self-drilling, thread length 16mm



Thread diameter    Shank diameter    Head diameter  
 $\Phi$  6.5                      4.2                       $\Phi$  8

Specification	P.N	Material
$\Phi$ 6.5×40	134311040	Titanium
$\Phi$ 6.5×45	134311045	Titanium
$\Phi$ 6.5×50	134311050	Titanium
$\Phi$ 6.5×55	134311055	Titanium
$\Phi$ 6.5×60	134311060	Titanium
$\Phi$ 6.5×65	134311065	Titanium
$\Phi$ 6.5×70	134311070	Titanium
$\Phi$ 6.5×75	134311075	Titanium
$\Phi$ 6.5×80	134311080	Titanium
$\Phi$ 6.5×85	134311085	Titanium
$\Phi$ 6.5×90	134311090	Titanium
$\Phi$ 6.5×95	134311095	Titanium
$\Phi$ 6.5×100	134311100	Titanium
$\Phi$ 6.5×105	134311105	Titanium
$\Phi$ 6.5×110	134311110	Titanium
$\Phi$ 6.5×115	134311115	Titanium
$\Phi$ 6.5×120	134311120	Titanium
$\Phi$ 6.5×125	134311125	Titanium
$\Phi$ 6.5×130	134311130	Titanium

Cannulated Screw System NUS  
Cannulated Screw  $\Phi$ 6.5mm, self-drilling, thread length 32mm



Thread diameter    Shank diameter    Head diameter  
 $\Phi$  6.5                       $\Phi$  4.2                       $\Phi$  8

Specification	P.N	Material
6.5X40	134312040	Titanium
$\Phi$ 6.5X45	134312045	Titanium
$\Phi$ 6.5X50	134312050	Titanium
$\Phi$ 6.5X55	134312055	Titanium
$\Phi$ 6.5X60	134312060	Titanium
$\Phi$ 6.5X65	134312065	Titanium
$\Phi$ 6.5X70	134312070	Titanium
$\Phi$ 6.5X75	134312075	Titanium
$\Phi$ 6.5X80	134312080	Titanium
$\Phi$ 6.5X85	134312085	Titanium
$\Phi$ 6.5X90	134312090	Titanium
$\Phi$ 6.5X95	134312095	Titanium
$\Phi$ 6.5X100	134312100	Titanium
$\Phi$ 6.5X105	134312105	Titanium
$\Phi$ 6.5X110	134312110	Titanium
$\Phi$ 6.5X115	134312115	Titanium
$\Phi$ 6.5X120	134312120	Titanium
$\Phi$ 6.5X125	134312125	Titanium
$\Phi$ 6.5X130	134312130	Titanium



## Cannulated Screw

Cannulated Screw System NUS  
Cannulated Screw  $\Phi$ 7.3mm, self-drilling,  
thread length 16mm



Thread diameter    Shank diameter    Head diameter  
 $\Phi$ 7.3                       $\Phi$ 4.5                       $\Phi$ 8

Specification	P.N	Material
$\Phi$ 7.3X40	134411040	Titanium
$\Phi$ 7.3X45	134411045	Titanium
$\Phi$ 7.3X50	134411050	Titanium
$\Phi$ 7.3X55	134411055	Titanium
$\Phi$ 7.3X60	134411060	Titanium
$\Phi$ 7.3X65	134411065	Titanium
$\Phi$ 7.3X70	134411070	Titanium
$\Phi$ 7.3X75	134411075	Titanium
$\Phi$ 7.3X80	134411080	Titanium
$\Phi$ 7.3X85	134411085	Titanium
$\Phi$ 7.3X90	134411090	Titanium
$\Phi$ 7.3X95	134411095	Titanium
$\Phi$ 7.3X100	134411100	Titanium
$\Phi$ 7.3X105	134411105	Titanium
$\Phi$ 7.3X110	134411110	Titanium
$\Phi$ 7.3X115	134411115	Titanium
$\Phi$ 7.3X120	134411120	Titanium
$\Phi$ 7.3X125	134411125	Titanium
$\Phi$ 7.3X130	134411130	Titanium
$\Phi$ 7.3X140	134411140	Titanium

Cannulated Screw System NUS  
Cannulated Screw  $\Phi$ 7.3mm, self-drilling,  
thread length 32mm



Thread diameter    Shank diameter    Head diameter  
 $\Phi$ 7.3                       $\Phi$ 4.5                       $\Phi$ 8

Specification	P.N	Material
$\Phi$ 7.3X40	134412040	Titanium
$\Phi$ 7.3X45	134412045	Titanium
$\Phi$ 7.3X50	134412050	Titanium
$\Phi$ 7.3X55	134412055	Titanium
$\Phi$ 7.3X60	134412060	Titanium
$\Phi$ 7.3X65	134412065	Titanium
$\Phi$ 7.3X70	134412070	Titanium
$\Phi$ 7.3X75	134412075	Titanium
$\Phi$ 7.3X80	134412080	Titanium
$\Phi$ 7.3X85	134412085	Titanium
$\Phi$ 7.3X90	134412090	Titanium
$\Phi$ 7.3X95	134412095	Titanium
$\Phi$ 7.3X100	134412100	Titanium
$\Phi$ 7.3X105	134412105	Titanium
$\Phi$ 7.3X110	134412110	Titanium
$\Phi$ 7.3X115	134412115	Titanium
$\Phi$ 7.3X120	134412120	Titanium
$\Phi$ 7.3X125	134412125	Titanium
$\Phi$ 7.3X130	134412130	Titanium
$\Phi$ 7.3X140	134412140	Titanium

Cannulated Screw

Cannulated Screw System NUS  
Washer



Specification	P.N	Material
Φ3.0	134630000	Titanium

Cannulated Screw System NUS  
Washer



Specification	P.N	Material
Φ6.5/7.3	134411000	Titanium
Φ4.5	134211000	Titanium

Headless Compression Cannulated Screw

Headless Compression Screw  $\Phi$ 2.5mm



Specification	P.N	Material
2.5×8	134713008	Titanium
2.5×9	134713009	Titanium
2.5×10	134713010	Titanium
2.5×11	134713011	Titanium
2.5×12	134713012	Titanium
2.5×13	134713013	Titanium
2.5×14	134713014	Titanium
2.5×16	134713016	Titanium
2.5×18	134713018	Titanium
2.5×20	134713020	Titanium
2.5×22	134713022	Titanium
2.5×24	134713024	Titanium
2.5×26	134713026	Titanium
2.5×28	134713028	Titanium
2.5×30	134713030	Titanium

Headless Compression Screw  $\Phi$ 3.0mm



Specification	P.N	Material
$\Phi$ 3. 0×10	134623010	Titanium
$\Phi$ 3. 0×11	134713011	Titanium
$\Phi$ 3. 0×12	134713012	Titanium
$\Phi$ 3. 0×13	134713013	Titanium
$\Phi$ 3. 0×14	134713014	Titanium
$\Phi$ 3. 0×16	134713016	Titanium
$\Phi$ 3. 0×18	134713018	Titanium
$\Phi$ 3. 0×20	134713020	Titanium
$\Phi$ 3. 0×22	134713022	Titanium
$\Phi$ 3. 0×24	134713024	Titanium
$\Phi$ 3. 0×26	134713026	Titanium
$\Phi$ 3. 0×28	134713028	Titanium
$\Phi$ 3. 0×30	134713030	Titanium

Headless Compression Screw  $\Phi$ 3.5mm



Specification	P.N	Material
$\Phi$ 3.5×16	134823016	Titanium
$\Phi$ 3.5×18	134823018	Titanium
$\Phi$ 3.5×20	134823020	Titanium
$\Phi$ 3.5×22	134823022	Titanium
$\Phi$ 3.5×24	134823024	Titanium
$\Phi$ 3.5×26	134823026	Titanium
$\Phi$ 3.5×28	134823028	Titanium
$\Phi$ 3.5×30	134823030	Titanium

Headless Compression Cannulated Screw

Headless Compression Screw  $\Phi$ 4.0mm



Specification	P.N	Material
$\Phi$ 4. 0 $\times$ 16	134923016	Titanium
$\Phi$ 4. 0 $\times$ 18	134923018	Titanium
$\Phi$ 4. 0 $\times$ 20	134923020	Titanium
$\Phi$ 4. 0 $\times$ 22	134923022	Titanium
$\Phi$ 4. 0 $\times$ 24	134923024	Titanium
$\Phi$ 4. 0 $\times$ 26	134923026	Titanium
$\Phi$ 4. 0 $\times$ 28	134923028	Titanium
$\Phi$ 4. 0 $\times$ 30	134923030	Titanium
$\Phi$ 4. 0 $\times$ 32	134923032	Titanium
$\Phi$ 4. 0 $\times$ 34	134923034	Titanium

Headless Compression Screw  $\Phi$ 4.5mm



Specification	P.N	Material
$\Phi$ 4.5 $\times$ 20	134223020	Titanium
$\Phi$ 4.5 $\times$ 22	134223022	Titanium
$\Phi$ 4.5 $\times$ 24	134223024	Titanium
$\Phi$ 4.5 $\times$ 26	134223026	Titanium
$\Phi$ 4.5 $\times$ 28	134223028	Titanium
$\Phi$ 4.5 $\times$ 30	134223030	Titanium
$\Phi$ 4.5 $\times$ 35	134223035	Titanium
$\Phi$ 4.5 $\times$ 40	134223040	Titanium
$\Phi$ 4.5 $\times$ 45	134223045	Titanium
$\Phi$ 4.5 $\times$ 50	134223050	Titanium

Headless Compression Screw  $\Phi$ 5.0mm



Specification	P.N	Material
$\Phi$ 5. 0 $\times$ 25	134023025	Titanium
$\Phi$ 5. 0 $\times$ 30	134023030	Titanium
$\Phi$ 5. 0 $\times$ 35	134023035	Titanium
$\Phi$ 5. 0 $\times$ 40	134023040	Titanium
$\Phi$ 5. 0 $\times$ 45	134023045	Titanium
$\Phi$ 5. 0 $\times$ 50	134023050	Titanium
$\Phi$ 5. 0 $\times$ 55	134023055	Titanium
$\Phi$ 5. 0 $\times$ 60	134023060	Titanium

Headless Compression Screw  $\Phi$ 6.5mm



Specification	P.N	Material
$\Phi$ 6.5 $\times$ 40	134323340	Titanium
$\Phi$ 6.5 $\times$ 45	134323345	Titanium
$\Phi$ 6.5 $\times$ 50	134323350	Titanium
$\Phi$ 6.5 $\times$ 55	134323355	Titanium
$\Phi$ 6.5 $\times$ 60	134323360	Titanium
$\Phi$ 6.5 $\times$ 65	134323365	Titanium
$\Phi$ 6.5 $\times$ 70	134323370	Titanium
$\Phi$ 6.5 $\times$ 75	134323375	Titanium
$\Phi$ 6.5 $\times$ 80	134323380	Titanium
$\Phi$ 6.5 $\times$ 85	134323385	Titanium
$\Phi$ 6.5 $\times$ 90	134323390	Titanium
$\Phi$ 6.5 $\times$ 95	134323395	Titanium
$\Phi$ 6.5 $\times$ 100	134323400	Titanium
$\Phi$ 6.5 $\times$ 105	134323405	Titanium
$\Phi$ 6.5 $\times$ 110	134323410	Titanium
$\Phi$ 6.5 $\times$ 115	134323415	Titanium
$\Phi$ 6.5 $\times$ 120	134323420	Titanium

Headless Compression Cannulated Screw

Headless Cannulated Screw  $\Phi$ 2.5mm



Specification	P.N	Material
$\Phi$ 2.5×8	134713108	Titanium
$\Phi$ 2.5×9	134713109	Titanium
$\Phi$ 2.5×10	134713110	Titanium
$\Phi$ 2.5×11	134713111	Titanium
$\Phi$ 2.5×12	134713112	Titanium
$\Phi$ 2.5×13	134713113	Titanium
$\Phi$ 2.5×14	134713114	Titanium
$\Phi$ 2.5×16	134713116	Titanium
$\Phi$ 2.5×18	134713118	Titanium
$\Phi$ 2.5×20	134713120	Titanium
$\Phi$ 2.5×22	134713122	Titanium
$\Phi$ 2.5×24	134713124	Titanium
$\Phi$ 2.5×26	134713126	Titanium
$\Phi$ 2.5×28	134713128	Titanium
$\Phi$ 2.5×30	134713130	Titanium

Headless Cannulated Screw  $\Phi$ 3.0mm



Specification	P.N	Material
$\Phi$ 3.0×10	134623110	Titanium
$\Phi$ 3.0×11	134623111	Titanium
$\Phi$ 3.0×12	134623112	Titanium
$\Phi$ 3.0×13	134623113	Titanium
$\Phi$ 3.0×14	134623114	Titanium
$\Phi$ 3.0×16	134623116	Titanium
$\Phi$ 3.0×18	134623118	Titanium
$\Phi$ 3.0×20	134623120	Titanium
$\Phi$ 3.0×22	134623122	Titanium
$\Phi$ 3.0×24	134623124	Titanium
$\Phi$ 3.0×26	134623126	Titanium
$\Phi$ 3.0×28	134623128	Titanium
$\Phi$ 3.0×30	134623130	Titanium

Headless Cannulated Screw  $\Phi$ 3.5mm



Specification	P.N	Material
$\Phi$ 3.5×16	134823116	Titanium
$\Phi$ 3.5×18	134823118	Titanium
$\Phi$ 3.5×20	134823120	Titanium
$\Phi$ 3.5×22	134823122	Titanium
$\Phi$ 3.5×24	134823124	Titanium
$\Phi$ 3.5×26	134823126	Titanium
$\Phi$ 3.5×28	134823128	Titanium
$\Phi$ 3.5×30	134823130	Titanium

Headless Compression Cannulated Screw

Headless Cannulated Screw  $\Phi$ 4.0mm



Specification	P.N	Material
$\Phi$ 4. 0 $\times$ 16	134923116	Titanium
$\Phi$ 4. 0 $\times$ 18	134923118	Titanium
$\Phi$ 4. 0 $\times$ 20	134923120	Titanium
$\Phi$ 4. 0 $\times$ 22	134923122	Titanium
$\Phi$ 4. 0 $\times$ 24	134923124	Titanium
$\Phi$ 4. 0 $\times$ 26	134923126	Titanium
$\Phi$ 4. 0 $\times$ 28	134923128	Titanium
$\Phi$ 4. 0 $\times$ 30	134923130	Titanium
$\Phi$ 4. 0 $\times$ 32	134923132	Titanium
$\Phi$ 4. 0 $\times$ 34	134923134	Titanium

Headless Cannulated Screw  $\Phi$ 4.5mm



Specification	P.N	Material
$\Phi$ 4.5 $\times$ 20	134223120	Titanium
$\Phi$ 4.5 $\times$ 22	134223122	Titanium
$\Phi$ 4.5 $\times$ 24	134223124	Titanium
$\Phi$ 4.5 $\times$ 26	134223126	Titanium
$\Phi$ 4.5 $\times$ 28	134223128	Titanium
$\Phi$ 4.5 $\times$ 30	134223130	Titanium
$\Phi$ 4.5 $\times$ 35	134223135	Titanium
$\Phi$ 4.5 $\times$ 40	134223140	Titanium
$\Phi$ 4.5 $\times$ 45	134223145	Titanium
$\Phi$ 4.5 $\times$ 50	134223150	Titanium

Headless Cannulated Screw  $\Phi$ 5.0mm



Specification	P.N	Material
$\Phi$ 5.0 $\times$ 25	134023125	Titanium
$\Phi$ 5.0 $\times$ 30	134023130	Titanium
$\Phi$ 5.0 $\times$ 35	134023135	Titanium
$\Phi$ 5.0 $\times$ 40	134023140	Titanium
$\Phi$ 5.0 $\times$ 45	134023145	Titanium
$\Phi$ 5.0 $\times$ 50	134023150	Titanium
$\Phi$ 5.0 $\times$ 55	134023155	Titanium
$\Phi$ 5.0 $\times$ 60	134023160	Titanium

Headless Cannulated Screw  $\Phi$ 6.5mm



Specification	P.N	Material
$\Phi$ 6.5 $\times$ 40	134323540	Titanium
$\Phi$ 6.5 $\times$ 45	134323545	Titanium
$\Phi$ 6.5 $\times$ 50	134323550	Titanium
$\Phi$ 6.5 $\times$ 55	134323555	Titanium
$\Phi$ 6.5 $\times$ 60	134323560	Titanium
$\Phi$ 6.5 $\times$ 65	134323565	Titanium
$\Phi$ 6.5 $\times$ 70	134323570	Titanium
$\Phi$ 6.5 $\times$ 75	134323575	Titanium
$\Phi$ 6.5 $\times$ 80	134323580	Titanium
$\Phi$ 6.5 $\times$ 85	134323585	Titanium
$\Phi$ 6.5 $\times$ 90	134323590	Titanium
$\Phi$ 6.5 $\times$ 95	134323595	Titanium
$\Phi$ 6.5 $\times$ 100	134323600	Titanium
$\Phi$ 6.5 $\times$ 105	134323605	Titanium
$\Phi$ 6.5 $\times$ 110	134323610	Titanium
$\Phi$ 6.5 $\times$ 115	134323615	Titanium
$\Phi$ 6.5 $\times$ 120	134323620	Titanium

PFN Femoral Nails

Proximal Femoral Nail System PFN  
Nail(extended)



Specification	Direction	P.N	Material
Φ 9X300	Left	135403530	Titanium
Φ 9X320	Left	135403532	Titanium
Φ 9X340	Left	135403534	Titanium
Φ 9X360	Left	135403536	Titanium
Φ 9X380	Left	135403538	Titanium
Φ 9X400	Left	135403540	Titanium
Φ 9X420	Left	135403542	Titanium
Φ 10X300	Left	135403630	Titanium
Φ 10X320	Left	135403632	Titanium
Φ 10X340	Left	135403634	Titanium
Φ 10X360	Left	135403636	Titanium
Φ 10X380	Left	135403638	Titanium
Φ 10X400	Left	135403640	Titanium
Φ 10X420	Left	135403642	Titanium
Φ 11X300	Left	135403730	Titanium
Φ 11X320	Left	135403732	Titanium
Φ 11X340	Left	135403734	Titanium
Φ 11X360	Left	135403736	Titanium
Φ 11X380	Left	135403738	Titanium
Φ 11X400	Left	135403740	Titanium
Φ 11X420	Left	135403742	Titanium
Φ 9X300	Right	135404530	Titanium
Φ 9X320	Right	135404532	Titanium
Φ 9X340	Right	135404534	Titanium
Φ 9X360	Right	135404536	Titanium
Φ 9X380	Right	135404538	Titanium
Φ 9X400	Right	135404540	Titanium
Φ 9X420	Right	135404542	Titanium
Φ 10X300	Right	135404630	Titanium
Φ 10X320	Right	135404632	Titanium
Φ 10X340	Right	135404634	Titanium
Φ 10X360	Right	135404636	Titanium
Φ 10X380	Right	135404638	Titanium
Φ 10X400	Right	135404640	Titanium
Φ 10X420	Right	135404642	Titanium
Φ 11X300	Right	135404730	Titanium
Φ 11X320	Right	135404732	Titanium
Φ 11X340	Right	135404734	Titanium
Φ 11X360	Right	135404736	Titanium
Φ 11X380	Right	135404738	Titanium
Φ 11X400	Right	135404740	Titanium
Φ 11X420	Right	135404742	Titanium

Proximal Femoral Nail System PFN  
Nail(standard)



Specification	P.N	Material
Φ 9X170	135406517	Titanium
Φ 9X200	135406520	Titanium
Φ 9X240	135406524	Titanium
Φ 10X170	135406617	Titanium
Φ 10X200	135406620	Titanium
Φ 10X240	135406624	Titanium
Φ 11X170	135406717	Titanium
Φ 11X200	135406720	Titanium
Φ 11X240	135406724	Titanium
Φ 12×170	135406817	Titanium
Φ 12×200	135406820	Titanium
Φ 12×240	135406824	Titanium
Φ 13×170	135406917	Titanium
Φ 13×200	135406920	Titanium
Φ 13×240	135406924	Titanium

PFN Femoral Nails

Proximal Femoral Nail System PFN  
Locking screw



Specification	P.N	Material
Φ4.9X20	135400020	Titanium
Φ4.9X24	135400024	Titanium
Φ4.9X28	135400028	Titanium
Φ4.9X30	135400030	Titanium
Φ4.9X32	135400032	Titanium
Φ4.9X34	135400034	Titanium
Φ4.9X36	135400036	Titanium
Φ4.9X38	135400038	Titanium
Φ4.9X40	135400040	Titanium
Φ4.9X42	135400042	Titanium
Φ4.9X44	135400044	Titanium
Φ4.9X46	135400046	Titanium
Φ4.9X48	135400048	Titanium
Φ4.9X50	135400050	Titanium
Φ4.9X52	135400052	Titanium
Φ4.9X56	135400056	Titanium
Φ4.9X60	135400060	Titanium
Φ4.9X64	135400064	Titanium
Φ4.9X68	135400068	Titanium
Φ4.9X70	135400070	Titanium
Φ4.9X72	135400072	Titanium
Φ4.9X76	135400076	Titanium
Φ4.9X80	135400080	Titanium

Proximal Femoral Nail System PFN  
Lag screw



Specification	P.N	Material
Φ10.4X70	135400270	Titanium
Φ10.4X75	135400275	Titanium
Φ10.4X80	135400280	Titanium
Φ10.4X85	135400285	Titanium
Φ10.4X90	135400290	Titanium
Φ10.4X95	135400295	Titanium
Φ10.4X100	135400200	Titanium
Φ10.4X105	135400205	Titanium
Φ10.4X110	135400210	Titanium
Φ10.4X115	135400215	Titanium
Φ10.4X120	135400220	Titanium

Proximal Femoral Nail System PFN  
Helical blade



Specification	P.N	Material
Φ10.4X75	135400375	Titanium
Φ10.4X80	135400380	Titanium
Φ10.4X85	135400385	Titanium
Φ10.4X90	135400390	Titanium
Φ10.4X95	135400395	Titanium
Φ10.4X100	135400300	Titanium
Φ10.4X105	135400305	Titanium
Φ10.4X110	135400310	Titanium
Φ10.4X115	135400315	Titanium
Φ10.4X120	135400320	Titanium



PFN Femoral Nails

Proximal Femoral Nail System PFN  
End cap



Specification	P.N	Diameter	Length	Material
5	135400101	Φ13.7	23.5	Titanium
10	135400102	Φ16.5	31	Titanium
15	135400103	Φ16.5	36	Titanium

Proximal Femoral Nail System PFN  
End cap II



Specification	P.N	Diameter	Length	Material
5	135400104	Φ16.5	41	Titanium
10	135400105	Φ16.5	46	Titanium
15	135400106	Φ16.5	51	Titanium

EFN Femoral Nails

Proximal Femoral Nail System EFN  
Nail(Cannulated)



Specification	Direction	P.N	Material
Φ9X300	Left	135503530	Titanium
Φ9X320	Left	135503532	Titanium
Φ9X340	Left	135503534	Titanium
Φ9X360	Left	135503536	Titanium
Φ9X380	Left	135503538	Titanium
Φ9X400	Left	135503540	Titanium
Φ9X420	Left	135503542	Titanium
Φ9X440	Left	135503544	Titanium
Φ9X460	Left	135503546	Titanium
Φ10X300	Left	135503630	Titanium
Φ10X320	Left	135503632	Titanium
Φ10X340	Left	135503634	Titanium
Φ10X360	Left	135503636	Titanium
Φ10X380	Left	135503638	Titanium
Φ10X400	Left	135503640	Titanium
Φ10X420	Left	135503642	Titanium
Φ10X440	Left	135503644	Titanium
Φ10X460	Left	135503646	Titanium
Φ11X300	Left	135503730	Titanium
Φ11X320	Left	135503732	Titanium
Φ11X340	Left	135503734	Titanium
Φ11X360	Left	135503736	Titanium
Φ11X380	Left	135503738	Titanium
Φ11X400	Left	135503740	Titanium
Φ11X420	Left	135503742	Titanium
Φ11X440	Left	135503744	Titanium
Φ11X460	Left	135503746	Titanium
Φ12×300	Left	135503830	Titanium
Φ12×320	Left	135503832	Titanium
Φ12×340	Left	135503834	Titanium
Φ12×360	Left	135503836	Titanium
Φ12×380	Left	135503838	Titanium
Φ12×400	Left	135503840	Titanium
Φ12×420	Left	135503842	Titanium
Φ12×440	Left	135503844	Titanium
Φ12×460	Left	135503846	Titanium
Φ9X300	Right	135504530	Titanium
Φ9X320	Right	135504532	Titanium
Φ9X340	Right	135504534	Titanium
Φ9X360	Right	135504536	Titanium
Φ9X380	Right	135504538	Titanium
Φ9X400	Right	135504540	Titanium
Φ9X420	Right	135504542	Titanium
Φ9X440	Right	135504544	Titanium
Φ9X460	Right	135504546	Titanium
Φ10X300	Right	135504630	Titanium
Φ10X320	Right	135504632	Titanium
Φ10X340	Right	135504634	Titanium
Φ10X360	Right	135504636	Titanium
Φ10X380	Right	135504638	Titanium
Φ10X400	Right	135504640	Titanium
Φ10X420	Right	135504642	Titanium
Φ10X440	Right	135504644	Titanium
Φ10X460	Right	135504646	Titanium
Φ11X300	Right	135504730	Titanium
Φ11X320	Right	135504732	Titanium
Φ11X340	Right	135504734	Titanium
Φ11X360	Right	135504736	Titanium
Φ11X380	Right	135504738	Titanium
Φ11X400	Right	135504740	Titanium
Φ11X420	Right	135504742	Titanium
Φ11X440	Right	135504744	Titanium
Φ11X460	Right	135504746	Titanium
Φ12×300	Right	135504830	Titanium
Φ12×320	Right	135504832	Titanium
Φ12×340	Right	135504834	Titanium
Φ12×360	Right	135504836	Titanium
Φ12×380	Right	135504838	Titanium
Φ12×400	Right	135504840	Titanium
Φ12×420	Right	135504842	Titanium
Φ12×440	Right	135504844	Titanium
Φ12×460	Right	135504846	Titanium

EFN Femoral Nails

Proximal Femoral Nail System EFN  
End cap



Specification	P.N	Material
5	135500101	Titanium
5	135500102	Titanium
10	135500103	Titanium
15	135500104	Titanium
20	135500105	Titanium
25	135500106	Titanium

Proximal Femoral Nail System EFN  
Lag Screw



Specification	P.N	Material
Φ7X60	135500260	Titanium
Φ7X65	135500265	Titanium
Φ7X70	135500270	Titanium
Φ7X75	135500275	Titanium
Φ7X80	135500280	Titanium
Φ7X85	135500285	Titanium
Φ7X90	135500290	Titanium
Φ7X95	135500295	Titanium
Φ7X100	135500200	Titanium
Φ7X105	135500205	Titanium
Φ7X110	135500210	Titanium
Φ7X115	135500215	Titanium
Φ7X120	135500220	Titanium
Φ7X125	135500225	Titanium
Φ7X130	135500230	Titanium
Φ7X135	135500235	Titanium
Φ7X140	135500240	Titanium
Φ7X145	135500245	Titanium
Φ7X150	135500250	Titanium

TN Tibial Nails

Tibia Nail System TN  
Tibia Nail



Specification	P.N	Material
Φ 8X250	135705425	Titanium
Φ 8X265	135705426	Titanium
Φ 8X280	135705428	Titanium
Φ 8X295	135705429	Titanium
Φ 8X310	135705431	Titanium
Φ 8X325	135705432	Titanium
Φ 8X340	135705434	Titanium
Φ 8X355	135705435	Titanium
Φ 8X375	135705437	Titanium
Φ 8X395	135705439	Titanium
Φ 8X415	135705441	Titanium
Φ 9X250	135705525	Titanium
Φ 9X265	135705526	Titanium
Φ 9X280	135705528	Titanium
Φ 9X295	135705529	Titanium
Φ 9X310	135705531	Titanium
Φ 9X325	135705532	Titanium
Φ 9X340	135705534	Titanium
Φ 9X355	135705535	Titanium
Φ 9X375	135705537	Titanium
Φ 9X395	135705539	Titanium
Φ 9X415	135705541	Titanium
Φ 10X250	135705625	Titanium
Φ 10X265	135705626	Titanium
Φ 10X280	135705628	Titanium
Φ 10X295	135705629	Titanium
Φ 10X310	135705631	Titanium
Φ 10X325	135705632	Titanium
Φ 10X340	135705634	Titanium
Φ 10X355	135705635	Titanium
Φ 10X375	135705637	Titanium
Φ 10X395	135705639	Titanium
Φ 10X415	135705641	Titanium

Tibia Nail System ETN  
End Cap I



Specification	P.N	Material
15	135700115	Titanium
20	135700120	Titanium
25	135700125	Titanium
30	135700130	Titanium

## TN Tibial Nails

### Tibia Nail System TN Locking Screw



Specification	P.N	Material
Φ 3.9X26	135700026	Titanium
Φ 3.9X28	135700028	Titanium
Φ 3.9X30	135700030	Titanium
Φ 3.9X32	135700032	Titanium
Φ 3.9X34	135700034	Titanium
Φ 3.9X36	135700036	Titanium
Φ 3.9X38	135700038	Titanium
Φ 3.9X40	135700040	Titanium
Φ 3.9X42	135700042	Titanium
Φ 3.9X44	135700044	Titanium
Φ 3.9X46	135700046	Titanium
Φ 3.9X48	135700048	Titanium
Φ 3.9X50	135700050	Titanium
Φ 3.9X52	135700052	Titanium
Φ 3.9X54	135700054	Titanium
Φ 3.9X56	135700056	Titanium
Φ 3.9X58	135700058	Titanium
Φ 3.9X60	135700060	Titanium
Φ 3.9X64	135700064	Titanium
Φ 3.9X68	135700068	Titanium
Φ 3.9X72	135700072	Titanium
Φ 3.9X76	135700076	Titanium
Φ 3.9X80	135700080	Titanium

## TN Tibial Nails

Tibia Nail System ETN  
Tibia Nail(Cannulated)



Specification	P.N	Material
Φ 8×255	135716425	Titanium
Φ 8×270	135716427	Titanium
Φ 8×285	135716428	Titanium
Φ 8×300	135716430	Titanium
Φ 8×315	135716431	Titanium
Φ 8×330	135716433	Titanium
Φ 8×345	135716434	Titanium
Φ 8×360	135716436	Titanium
Φ 8×375	135716437	Titanium
Φ 9×255	135716525	Titanium
Φ 9×270	135716527	Titanium
Φ 9×285	135716528	Titanium
Φ 9×300	135716530	Titanium
Φ 9×315	135716531	Titanium
Φ 9×330	135716533	Titanium
Φ 9×345	135716534	Titanium
Φ 9×360	135716536	Titanium
Φ 9×375	135716537	Titanium
Φ 10×255	135716625	Titanium
Φ 10×270	135716627	Titanium
Φ 10×285	135716628	Titanium
Φ 10×300	135716630	Titanium
Φ 10×315	135716631	Titanium
Φ 10×330	135716633	Titanium
Φ 10×345	135716634	Titanium
Φ 10×360	135716636	Titanium
Φ 10×375	135716637	Titanium
Φ 11×255	135716725	Titanium
Φ 11×270	135716727	Titanium
Φ 11×285	135716728	Titanium
Φ 11×300	135716730	Titanium
Φ 11×315	135716731	Titanium
Φ 11×330	135716733	Titanium
Φ 11×345	135716734	Titanium
Φ 11×360	135716736	Titanium
Φ 11×375	135716737	Titanium

## TN Tibial Nails

TibiaNailSystem ETN  
LockingScrew



Specification	P.N	Material
Φ3.9X26	135700026	Titanium
Φ3.9X28	135700028	Titanium
Φ3.9X30	135700030	Titanium
Φ3.9X32	135700032	Titanium
Φ3.9X34	135700034	Titanium
Φ3.9X36	135700036	Titanium
Φ3.9X38	135700038	Titanium
Φ3.9X40	135700040	Titanium
Φ3.9X42	135700042	Titanium
Φ3.9X44	135700044	Titanium
Φ3.9X46	135700046	Titanium
Φ3.9X48	135700048	Titanium
Φ3.9X50	135700050	Titanium
Φ3.9X52	135700052	Titanium
Φ3.9X54	135700054	Titanium
Φ3.9X56	135700056	Titanium
Φ3.9X58	135700058	Titanium
Φ3.9X60	135700060	Titanium
Φ3.9X64	135700064	Titanium
Φ3.9X68	135700068	Titanium
Φ3.9X72	135700072	Titanium
Φ3.9X76	135700076	Titanium
Φ3.9X80	135700080	Titanium

Tibia Nail System ETN  
Locking Screw



Specification	P.N	Material
Φ4.9X20	135400020	Titanium
Φ4.9X24	135400024	Titanium
Φ4.9X28	135400028	Titanium
Φ4.9X30	135400030	Titanium
Φ4.9X32	135400032	Titanium
Φ4.9X34	135400034	Titanium
Φ4.9X36	135400036	Titanium
Φ4.9X38	135400038	Titanium
Φ4.9X40	135400040	Titanium
Φ4.9X42	135400042	Titanium
Φ4.9X44	135400044	Titanium
Φ4.9X46	135400046	Titanium
Φ4.9X48	135400048	Titanium
Φ4.9X50	135400050	Titanium
Φ4.9X52	135400052	Titanium
Φ4.9X56	135400056	Titanium
Φ4.9X60	135400060	Titanium
Φ4.9X64	135400064	Titanium
Φ4.9X68	135400068	Titanium
Φ4.9X70	135400070	Titanium
Φ4.9X72	135400072	Titanium
Φ4.9X76	135400076	Titanium
Φ4.9X80	135400080	Titanium

## TN Tibial Nails

Tibia Nail System ETN  
Locking screw I



Specification	P.N	Material
Φ5×25	135710025	Titanium
Φ5×30	135710030	Titanium
Φ5×35	135710035	Titanium
Φ5×40	135710040	Titanium
Φ5×45	135710045	Titanium
Φ5×50	135710050	Titanium
Φ5×55	135710055	Titanium
Φ5×60	135710060	Titanium
Φ5×65	135710065	Titanium
Φ5×70	135710070	Titanium
Φ5×75	135710075	Titanium
Φ5×80	135710080	Titanium
Φ5×85	135710085	Titanium
Φ5×90	135710090	Titanium

Tibia Nail System ETN  
End cap(long)



Specification	P.N	Material
5	135711105	Titanium

Tibia Nail System ETN  
End cap



Specification	P.N	Material
5	135711005	Titanium
10	135711010	Titanium
15	135711015	Titanium
20	135711020	Titanium





**BONE**  
TRAUMA & SPINE SOLUTIONS





BONE - Ti es una marca Tocamedic Colombia

Carrera 16 No. 13C - 78  
Valledupar - Cesar - Colombia  
Tel: (57)(5) 589 85 22  
Cel: (57) 310 459 1567  
[info@bone-ti.com](mailto:info@bone-ti.com)  
[ventas@tocamedic.com](mailto:ventas@tocamedic.com)

  [@bone.tioficial](https://www.instagram.com/bone.tioficial)

[www.bone-ti.com](http://www.bone-ti.com)